



PROPERTY AND CASUALTY COMPANIES - ASSOCIATION EDITION

QUARTERLY STATEMENT

AS OF MARCH 31, 2023

OF THE CONDITION AND AFFAIRS OF THE

MGIC INDEMNITY CORPORATION

NAIC Group Code 0105 0105 NAIC Company Code 18740 Employer's ID Number 39-0916088
(Current) (Prior)

Organized under the Laws of Wisconsin, State of Domicile or Port of Entry WI

Country of Domicile United States of America

Incorporated/Organized 11/15/1956 Commenced Business 02/15/1957

Statutory Home Office 250 East Kilbourn Avenue, Milwaukee, WI, US 53202
(Street and Number) (City or Town, State, Country and Zip Code)

Main Administrative Office 250 East Kilbourn Avenue
(Street and Number)
Milwaukee, WI, US 53202 800-558-9900
(City or Town, State, Country and Zip Code) (Area Code) (Telephone Number)

Mail Address P.O. Box 756, Milwaukee, WI, US 53201
(Street and Number or P.O. Box) (City or Town, State, Country and Zip Code)

Primary Location of Books and Records 250 East Kilbourn Avenue
(Street and Number)
Milwaukee, WI, US 53202 800-558-9900
(City or Town, State, Country and Zip Code) (Area Code) (Telephone Number)

Internet Website Address www.MGIC.com

Statutory Statement Contact Heidi Ann Heyrman, 800-558-9900-2646
(Name) (Area Code) (Telephone Number)
govreg_alerts@mgic.com 414-347-6959
(E-mail Address) (FAX Number)

OFFICERS

President & Chief Operating Officer Salvatore Antonino Miosi Vice President & Controller Julie Kay Sperber
Executive Vice President & Secretary Paula Christine Maggio

OTHER

Nathaniel Howe Colson, Executive Vice President James Jeffrey Hughes, Executive Vice President Timothy James Mattke, Chief Executive Officer
Steven Mark Thompson, Executive Vice President

DIRECTORS OR TRUSTEES

Nathan Ryan Abramowski Nathaniel Howe Colson Heidi Ann Heyrman
Paula Christine Maggio Timothy James Mattke Salvatore Antonino Miosi
Julie Kay Sperber Steven Mark Thompson

State of Wisconsin SS:
County of Milwaukee

The officers of this reporting entity being duly sworn, each depose and say that they are the described officers of said reporting entity, and that on the reporting period stated above, all of the herein described assets were the absolute property of the said reporting entity, free and clear from any liens or claims thereon, except as herein stated, and that this statement, together with related exhibits, schedules and explanations therein contained, annexed or referred to, is a full and true statement of all the assets and liabilities and of the condition and affairs of the said reporting entity as of the reporting period stated above, and of its income and deductions therefrom for the period ended, and have been completed in accordance with the NAIC Annual Statement Instructions and Accounting Practices and Procedures manual except to the extent that: (1) state law may differ; or, (2) that state rules or regulations require differences in reporting not related to accounting practices and procedures, according to the best of their information, knowledge and belief, respectively. Furthermore, the scope of this attestation by the described officers also includes the related corresponding electronic filing with the NAIC, when required, that is an exact copy (except for formatting differences due to electronic filing) of the enclosed statement. The electronic filing may be requested by various regulators in lieu of or in addition to the enclosed statement.

Salvatore Antonino Miosi
President & Chief Operating Officer

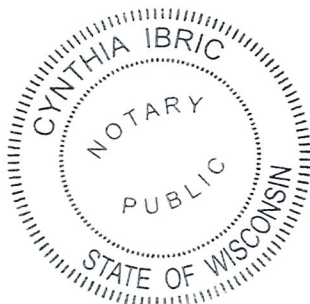
Paula Christine Maggio
Executive Vice President & Secretary

Julie Kay Sperber
Vice President & Controller

Subscribed and sworn to before me this 10th day of May, 2023

Cynthia Ibric
Cynthia Ibric
Notary Public
My commission expires November 15, 2023

- a. Is this an original filing? Yes [X] No []
b. If no,
1. State the amendment number.....
2. Date filed
3. Number of pages attached.....



STATEMENT AS OF MARCH 31, 2023 OF THE MGIC INDEMNITY CORPORATION

ASSETS

	Current Statement Date			4 December 31 Prior Year Net Admitted Assets
	1 Assets	2 Nonadmitted Assets	3 Net Admitted Assets (Cols. 1 - 2)	
1. Bonds	148,585,718		148,585,718	160,776,581
2. Stocks:				
2.1 Preferred stocks				
2.2 Common stocks				
3. Mortgage loans on real estate:				
3.1 First liens				
3.2 Other than first liens.....				
4. Real estate:				
4.1 Properties occupied by the company (less \$ encumbrances)				
4.2 Properties held for the production of income (less \$ encumbrances)				
4.3 Properties held for sale (less \$ encumbrances)				
5. Cash (\$ 460,390), cash equivalents (\$ 8,399,155) and short-term investments (\$)	8,859,545		8,859,545	6,998,991
6. Contract loans (including \$ premium notes)				
7. Derivatives				
8. Other invested assets				
9. Receivables for securities				810,000
10. Securities lending reinvested collateral assets				
11. Aggregate write-ins for invested assets				
12. Subtotals, cash and invested assets (Lines 1 to 11)	157,445,263		157,445,263	168,585,572
13. Title plants less \$ charged off (for Title insurers only)				
14. Investment income due and accrued	1,230,769		1,230,769	1,456,531
15. Premiums and considerations:				
15.1 Uncollected premiums and agents' balances in the course of collection	5,380		5,380	7,789
15.2 Deferred premiums, agents' balances and installments booked but deferred and not yet due (including \$ earned but unbilled premiums)				
15.3 Accrued retrospective premiums (\$) and contracts subject to redetermination (\$)				
16. Reinsurance:				
16.1 Amounts recoverable from reinsurers	11,625		11,625	32,687
16.2 Funds held by or deposited with reinsured companies				
16.3 Other amounts receivable under reinsurance contracts				
17. Amounts receivable relating to uninsured plans				
18.1 Current federal and foreign income tax recoverable and interest thereon				
18.2 Net deferred tax asset	2,298,235	814,316	1,483,919	1,555,083
19. Guaranty funds receivable or on deposit				
20. Electronic data processing equipment and software				
21. Furniture and equipment, including health care delivery assets (\$)				
22. Net adjustment in assets and liabilities due to foreign exchange rates				
23. Receivables from parent, subsidiaries and affiliates				
24. Health care (\$) and other amounts receivable				
25. Aggregate write-ins for other than invested assets	86,873		86,873	84,113
26. Total assets excluding Separate Accounts, Segregated Accounts and Protected Cell Accounts (Lines 12 to 25)	161,078,145	814,316	160,263,829	171,721,775
27. From Separate Accounts, Segregated Accounts and Protected Cell Accounts				
28. Total (Lines 26 and 27)	161,078,145	814,316	160,263,829	171,721,775
DETAILS OF WRITE-INS				
1101.				
1102.				
1103.				
1198. Summary of remaining write-ins for Line 11 from overflow page				
1199. Totals (Lines 1101 through 1103 plus 1198)(Line 11 above)				
2501. Miscellaneous receivables	86,873		86,873	84,113
2502.				
2503.				
2598. Summary of remaining write-ins for Line 25 from overflow page				
2599. Totals (Lines 2501 through 2503 plus 2598)(Line 25 above)	86,873		86,873	84,113

NOTE: We elected to use rounding in reporting amounts in this statement.

STATEMENT AS OF MARCH 31, 2023 OF THE MGIC INDEMNITY CORPORATION
LIABILITIES, SURPLUS AND OTHER FUNDS

	1 Current Statement Date	2 December 31, Prior Year
1. Losses (current accident year \$9,282)	213,687	311,841
2. Reinsurance payable on paid losses and loss adjustment expenses		
3. Loss adjustment expenses	5,816	8,575
4. Commissions payable, contingent commissions and other similar charges		
5. Other expenses (excluding taxes, licenses and fees)	18,784	16,607
6. Taxes, licenses and fees (excluding federal and foreign income taxes)	14,022	3,068
7.1 Current federal and foreign income taxes (including \$ (161,051) on realized capital gains (losses))	523,821	519,907
7.2 Net deferred tax liability		
8. Borrowed money \$ and interest thereon \$		
9. Unearned premiums (after deducting unearned premiums for ceded reinsurance of \$3,702 and including warranty reserves of \$ and accrued accident and health experience rating refunds including \$ for medical loss ratio rebate per the Public Health Service Act)	3,162,161	3,486,898
10. Advance premium		
11. Dividends declared and unpaid:		
11.1 Stockholders		
11.2 Policyholders		
12. Ceded reinsurance premiums payable (net of ceding commissions)	15,364	55,490
13. Funds held by company under reinsurance treaties		
14. Amounts withheld or retained by company for account of others		
15. Remittances and items not allocated		
16. Provision for reinsurance (including \$ certified)		
17. Net adjustments in assets and liabilities due to foreign exchange rates		
18. Drafts outstanding		
19. Payable to parent, subsidiaries and affiliates	5,789	8,020
20. Derivatives		
21. Payable for securities		
22. Payable for securities lending		
23. Liability for amounts held under uninsured plans		
24. Capital notes \$ and interest thereon \$		
25. Aggregate write-ins for liabilities	51,484,501	53,674,494
26. Total liabilities excluding protected cell liabilities (Lines 1 through 25)	55,443,945	58,084,900
27. Protected cell liabilities		
28. Total liabilities (Lines 26 and 27)	55,443,945	58,084,900
29. Aggregate write-ins for special surplus funds		
30. Common capital stock	3,588,000	3,588,000
31. Preferred capital stock		
32. Aggregate write-ins for other than special surplus funds		
33. Surplus notes		
34. Gross paid in and contributed surplus	98,225,792	98,225,792
35. Unassigned funds (surplus)	3,006,092	11,823,083
36. Less treasury stock, at cost:		
36.1 shares common (value included in Line 30 \$)		
36.2 shares preferred (value included in Line 31 \$)		
37. Surplus as regards policyholders (Lines 29 to 35, less 36)	104,819,884	113,636,875
38. Totals (Page 2, Line 28, Col. 3)	160,263,829	171,721,775
DETAILS OF WRITE-INS		
2501. Contingency reserve per Wisconsin Administrative Code Section Insurance 3.09(14)	51,484,501	53,674,494
2502.		
2503.		
2598. Summary of remaining write-ins for Line 25 from overflow page		
2599. Totals (Lines 2501 through 2503 plus 2598)(Line 25 above)	51,484,501	53,674,494
2901.		
2902.		
2903.		
2998. Summary of remaining write-ins for Line 29 from overflow page		
2999. Totals (Lines 2901 through 2903 plus 2998)(Line 29 above)		
3201.		
3202.		
3203.		
3298. Summary of remaining write-ins for Line 32 from overflow page		
3299. Totals (Lines 3201 through 3203 plus 3298)(Line 32 above)		

STATEMENT AS OF MARCH 31, 2023 OF THE MGIC INDEMNITY CORPORATION

STATEMENT OF INCOME

	1 Current Year to Date	2 Prior Year to Date	3 Prior Year Ended December 31
UNDERWRITING INCOME			
1. Premiums earned:			
1.1 Direct (written \$ 21,000)	349,642	421,264	1,692,435
1.2 Assumed (written \$)			
1.3 Ceded (written \$ 19,205)	23,110	52,062	156,442
1.4 Net (written \$ 1,795)	326,532	369,202	1,535,993
DEDUCTIONS:			
2. Losses incurred (current accident year \$ 9,282):			
2.1 Direct	(180,665)	29,427	(1,214,354)
2.2 Assumed			
2.3 Ceded	(71,148)	(160,224)	(372,255)
2.4 Net	(109,517)	189,651	(842,099)
3. Loss adjustment expenses incurred	(3,012)	5,215	(22,635)
4. Other underwriting expenses incurred	51,596	31,939	235,397
5. Aggregate write-ins for underwriting deductions	(2,189,992)	(433,899)	(2,259,349)
6. Total underwriting deductions (Lines 2 through 5)	(2,250,925)	(207,094)	(2,888,686)
7. Net income of protected cells			
8. Net underwriting gain (loss) (Line 1 minus Line 6 + Line 7)	2,577,457	576,296	4,424,679
INVESTMENT INCOME			
9. Net investment income earned	1,254,671	967,864	4,312,318
10. Net realized capital gains (losses) less capital gains tax of \$ (147,973)	(556,658)		(2,471)
11. Net investment gain (loss) (Lines 9 + 10)	698,013	967,864	4,309,847
OTHER INCOME			
12. Net gain or (loss) from agents' or premium balances charged off (amount recovered \$ amount charged off \$ (47))	47	249	483
13. Finance and service charges not included in premiums			
14. Aggregate write-ins for miscellaneous income			
15. Total other income (Lines 12 through 14)	47	249	483
16. Net income before dividends to policyholders, after capital gains tax and before all other federal and foreign income taxes (Lines 8 + 11 + 15)	3,275,517	1,544,409	8,735,009
17. Dividends to policyholders			
18. Net income, after dividends to policyholders, after capital gains tax and before all other federal and foreign income taxes (Line 16 minus Line 17)	3,275,517	1,544,409	8,735,009
19. Federal and foreign income taxes incurred	720,887	239,307	1,543,559
20. Net income (Line 18 minus Line 19)(to Line 22)	2,554,630	1,305,102	7,191,450
CAPITAL AND SURPLUS ACCOUNT			
21. Surplus as regards policyholders, December 31 prior year	113,636,875	106,367,262	106,367,262
22. Net income (from Line 20)	2,554,630	1,305,102	7,191,450
23. Net transfers (to) from Protected Cell accounts			
24. Change in net unrealized capital gains (losses) less capital gains tax of \$ (96)	(361)	(60)	
25. Change in net unrealized foreign exchange capital gain (loss)			
26. Change in net deferred income tax	(80,756)	(80,366)	(275,104)
27. Change in nonadmitted assets	9,496	(986)	353,267
28. Change in provision for reinsurance			
29. Change in surplus notes			
30. Surplus (contributed to) withdrawn from protected cells			
31. Cumulative effect of changes in accounting principles			
32. Capital changes:			
32.1 Paid in			
32.2 Transferred from surplus (Stock Dividend)			
32.3 Transferred to surplus			
33. Surplus adjustments:			
33.1 Paid in			
33.2 Transferred to capital (Stock Dividend)			
33.3 Transferred from capital			
34. Net remittances from or (to) Home Office			
35. Dividends to stockholders	(11,300,000)		
36. Change in treasury stock			
37. Aggregate write-ins for gains and losses in surplus			
38. Change in surplus as regards policyholders (Lines 22 through 37)	(8,816,991)	1,223,690	7,269,613
39. Surplus as regards policyholders, as of statement date (Lines 21 plus 38)	104,819,884	107,590,952	113,636,875
DETAILS OF WRITE-INS			
0501. Contingency reserve contribution per Wisconsin Administrative Code Section Insurance 3.09(14)	163,266	175,492	746,080
0502. 120 month release of statutory contingency reserve	(2,353,258)	(609,391)	(3,005,429)
0503.			
0598. Summary of remaining write-ins for Line 5 from overflow page			
0599. Totals (Lines 0501 through 0503 plus 0598)(Line 5 above)	(2,189,992)	(433,899)	(2,259,349)
1401.			
1402.			
1403.			
1498. Summary of remaining write-ins for Line 14 from overflow page			
1499. Totals (Lines 1401 through 1403 plus 1498)(Line 14 above)			
3701.			
3702.			
3703.			
3798. Summary of remaining write-ins for Line 37 from overflow page			
3799. Totals (Lines 3701 through 3703 plus 3798)(Line 37 above)			

STATEMENT AS OF MARCH 31, 2023 OF THE MGIC INDEMNITY CORPORATION

CASH FLOW

	1 Current Year To Date	2 Prior Year To Date	3 Prior Year Ended December 31
Cash from Operations			
1. Premiums collected net of reinsurance	(35,922)	22,581	113,344
2. Net investment income	1,607,844	1,348,307	4,792,317
3. Miscellaneous income	47	249	483
4. Total (Lines 1 to 3)	1,571,969	1,371,137	4,906,144
5. Benefit and loss related payments	(32,408)	17,866	(28,712)
6. Net transfers to Separate Accounts, Segregated Accounts and Protected Cell Accounts			
7. Commissions, expenses paid and aggregate write-ins for deductions	43,134	118,063	352,967
8. Dividends paid to policyholders			
9. Federal and foreign income taxes paid (recovered) net of \$ tax on capital gains (losses)	569,000		898,557
10. Total (Lines 5 through 9)	579,726	135,929	1,222,812
11. Net cash from operations (Line 4 minus Line 10)	992,243	1,235,208	3,683,332
Cash from Investments			
12. Proceeds from investments sold, matured or repaid:			
12.1 Bonds	9,922,176	3,990,112	22,868,724
12.2 Stocks			
12.3 Mortgage loans			
12.4 Real estate			
12.5 Other invested assets			
12.6 Net gains or (losses) on cash, cash equivalents and short-term investments	(470)	(76)	(324)
12.7 Miscellaneous proceeds	810,000	50,000	(760,000)
12.8 Total investment proceeds (Lines 12.1 to 12.7)	10,731,706	4,040,036	22,108,400
13. Cost of investments acquired (long-term only):			
13.1 Bonds	5,020,025	5,254,026	26,468,834
13.2 Stocks			
13.3 Mortgage loans			
13.4 Real estate			
13.5 Other invested assets			
13.6 Miscellaneous applications		(1,002,202)	
13.7 Total investments acquired (Lines 13.1 to 13.6)	5,020,025	4,251,824	26,468,834
14. Net increase (or decrease) in contract loans and premium notes			
15. Net cash from investments (Line 12.8 minus Line 13.7 and Line 14)	5,711,681	(211,788)	(4,360,434)
Cash from Financing and Miscellaneous Sources			
16. Cash provided (applied):			
16.1 Surplus notes, capital notes			
16.2 Capital and paid in surplus, less treasury stock			
16.3 Borrowed funds			
16.4 Net deposits on deposit-type contracts and other insurance liabilities			
16.5 Dividends to stockholders	4,841,138		
16.6 Other cash provided (applied)	(2,232)	77,000	(28,501)
17. Net cash from financing and miscellaneous sources (Line 16.1 through Line 16.4 minus Line 16.5 plus Line 16.6)	(4,843,370)	77,000	(28,501)
RECONCILIATION OF CASH, CASH EQUIVALENTS AND SHORT-TERM INVESTMENTS			
18. Net change in cash, cash equivalents and short-term investments (Line 11, plus Lines 15 and 17)	1,860,554	1,100,420	(705,603)
19. Cash, cash equivalents and short-term investments:			
19.1 Beginning of year	6,998,991	7,704,594	7,704,594
19.2 End of period (Line 18 plus Line 19.1)	8,859,545	8,805,014	6,998,991
Note: Supplemental disclosures of cash flow information for non-cash transactions:			
20.0001. Line 12.1 Bonds - Dividend paid to Parent	6,458,862		
20.0002. Line 16.5 Dividends to stockholders - Dividend paid to Parent	6,458,862		

STATEMENT AS OF MARCH 31, 2023 OF THE MGIC INDEMNITY CORPORATION

NOTES TO FINANCIAL STATEMENTS

1. Summary of Significant Accounting Policies and Going Concern

A. Accounting Practices

The financial statements of MGIC Indemnity Corporation (“MIC”) are presented on the basis of accounting practices prescribed or permitted by the Office of the Commissioner of Insurance of the State of Wisconsin (“OCI”). The OCI recognizes only statutory accounting practices prescribed or permitted by the State of Wisconsin for determining and reporting the financial condition and results of operations of an insurance company, for determining its solvency under the Wisconsin insurance law. The National Association of Insurance Commissioners’ (“NAIC”) *Accounting Practices and Procedures Manual* (“NAIC SAP”) has been adopted as a component of prescribed practices by the OCI. The OCI has adopted certain prescribed accounting practices that differ from those found in NAIC SAP. Specifically, Wisconsin domiciled companies record changes in the contingency reserve through the income statement as an underwriting deduction. In NAIC SAP, changes in the contingency reserve are recorded directly to unassigned surplus. In addition, Wisconsin domiciled companies’ annual contribution to the contingency reserve is calculated as the greater of a) fifty percent of earned premium or b) one-seventh of the result of the minimum policyholders’ position calculation provided under Wisconsin Administrative Code Section Insurance 3.09(14). In NAIC SAP, the annual contribution to the contingency reserve is fifty percent of earned premium. The OCI has the right to permit other specific practices that deviate from prescribed practices. A reconciliation of our net income and capital and surplus between the NAIC SAP and practices permitted by the OCI is shown below:

	SSAP #	F/S Page	F/S Line #	2023	2022
<u>NET INCOME</u>					
(1) State basis (Page 4, Line 20, Columns 1 & 3)	XXX	XXX	XXX	\$ 2,554,630	\$ 7,191,450
(2) State Prescribed Practices that are an increase/(decrease) from NAIC SAP					
Change in contingency reserve	00	4	5	2,189,992	2,259,349
(3) State Permitted Practices that are an increase/(decrease) from NAIC SAP				-	-
(4) NAIC SAP (1-2-3=4)	XXX	XXX	XXX	\$ 364,638	\$ 4,932,101
<u>SURPLUS</u>					
(5) State basis (Page 3, Line 37, Columns 1 & 2)	XXX	XXX	XXX	\$ 104,819,884	\$ 113,636,875
(6) State Prescribed Practices that are an increase/(decrease) from NAIC SAP				-	-
(7) State Permitted Practices that are an increase/(decrease) from NAIC SAP				-	-
(8) NAIC SAP (5-6-7=8)	XXX	XXX	XXX	\$ 104,819,884	\$ 113,636,875

B. Use of Estimates in the Preparation of the Financial Statements – no significant changes

C. Accounting Policy

- (1) No significant changes
- (2) Generally, bonds are stated at amortized cost and are amortized using the modified scientific method in accordance with SSAP No. 26R, Bonds (“SSAP No. 26R”). We do not own any mandatory convertible securities or SVO-identified investments identified in SSAP No. 26R.
- (3) - (5) No significant changes
- (6) Loan-backed securities are valued using the retrospective or prospective method and stated at amortized cost or fair value in accordance with their NAIC designation.
- (7) - (10) No significant changes
- (11) Case reserves and loss adjustment expenses (“LAE”) reserves are established when notices of delinquency on insured mortgage loans are received. Such loans are referred to as being in our delinquency inventory. For reporting purposes, we consider a loan delinquent when it is two or more payments past due and has not become current or resulted in a claim payment. Consistent with industry standards for mortgage insurers, we do not establish case reserves for future claims on insured loans which are not currently delinquent. Case reserves are established by estimating the number of loans in our delinquency inventory that will result in a claim payment, which is referred to as the claim rate, and further estimating the amount of the claim payment, which is referred to as claim severity. Our case reserve estimates are established based upon historical experience, including rescissions of policies, curtailments of claims, and loan modification activity. Adjustments to reserve estimates are reflected in the financial statements in the years in which the adjustments are made.

Incurred but not reported (“IBNR”) reserves are established for estimated losses from delinquencies we estimate have occurred prior to the close of an accounting period but have not yet been reported to us. IBNR reserves are also established using estimated claim rates and claim severities.

LAE reserves are established for the estimated costs of settling claims, including legal and other expenses and general expenses of administering the claims settlement process.

Loss reserves are ceded to reinsurers under our reinsurance agreements.

Estimation of losses is inherently judgmental. Even in a stable environment, changes to our estimates could result in a material impact to our results of operations or financial position. The conditions that affect the claim rate and claim severity include the current and future state of the domestic economy, including unemployment and the current and future strength of local housing markets; exposure on insured loans; the amount of time between delinquency and claim filing (all else being equal, the longer the period between delinquency and claim filing, the greater the severity); and curtailments and rescissions. The actual amount of the claim payments may be substantially different than our loss reserve estimates. Our estimates could be adversely affected by several factors, including a deterioration of regional or national economic conditions, including unemployment, leading to a reduction in borrowers’ income and thus their ability to make mortgage payments, the impact of past and future government initiatives and actions taken by Fannie Mae and Freddie Mac (including mortgage forbearance programs and foreclosure moratoriums), and a drop in housing values which may affect borrower willingness to continue to make mortgage payments when the value of the home is below the mortgage balance. Loss reserves in future periods will also be dependent on the number of loans reported to us as delinquent. Changes to our estimates could result in a material impact to our results of operations and financial position, even in a stable economic environment.

- (12) – (13) No significant changes

D. Going Concern

Based upon its evaluation of relevant conditions and events, management does not have substantial doubt about our ability to continue as a going concern.

2. Accounting Changes and Corrections of Errors – not applicable

3. Business Combinations and Goodwill – not applicable

4. Discontinued Operations – not applicable

5. Investments

A. Mortgage Loans, including Mezzanine Real Estate Loans – not applicable

B. Debt Restructuring – not applicable

C. Reverse Mortgages – not applicable

D. Loan-Backed Securities

- (1) Prepayment assumptions for mortgage-backed/loan-backed and structured securities were obtained from third-party sources.
- (2) We did not recognize any other-than-temporary impairments (“OTTI”) in the current reporting period.
- (3) We do not currently hold any securities for which an OTTI has been recognized.

STATEMENT AS OF MARCH 31, 2023 OF THE MGIC INDEMNITY CORPORATION

- (4) All impaired securities for which an OTTI has not been recognized in earnings as a realized loss:
- a. The aggregate amount of unrealized losses:
 1. Less than 12 months \$ 14,855
 2. 12 months or longer \$ 570,149
 - b. The aggregate related fair value of securities with unrealized losses:
 1. Less than 12 months \$ 2,464,840
 2. 12 months or longer \$ 10,253,368
- (5) All loan-backed and structured securities in an unrealized loss position were reviewed for potential OTTIs; however, we have the intent and ability to hold these securities long enough to recover our cost basis. Cash flow analysis and credit research were used to support the conclusion that impairments are not other-than-temporary. The unrealized losses were primarily caused by an increase in prevailing interest rates.
- E. Dollar Repurchase Agreements and/or Securities Lending Transactions – not applicable
 - F. Repurchase Agreements Transactions Accounted for as Secured Borrowing – not applicable
 - G. Reverse Repurchase Agreements Transactions Accounted for as Secured Borrowing – not applicable
 - H. Repurchase Agreements Transactions Accounted for as a Sale – not applicable
 - I. Reverse Repurchase Agreements Transactions Accounted for as a Sale – not applicable
 - J. Real Estate – not applicable
 - K. Low-Income Housing Tax Credits (“LIHTC”) – not applicable
 - L. Restricted Assets – no significant changes
 - M. Working Capital Finance Investments – not applicable
 - N. Offsetting and Netting of Assets and Liabilities – not applicable
 - O. 5GI Securities – not applicable
 - P. Short Sales – not applicable
 - Q. Prepayment Penalty and Acceleration Fees – no significant changes
 - R. Reporting Entity’s Share of Cash Pool by Asset Type – not applicable
6. Joint Ventures, Partnerships and Limited Liability Companies – not applicable
 7. Investment Income – not applicable
 8. Derivative Instruments – not applicable
 9. Income Taxes – no significant changes
- The Inflation Reduction Act of 2022 (the “Act”) was enacted on August 16, 2022. The Act includes provisions for a Corporate Alternative Minimum Tax (“CAMT”) that is effective in 2023. We are not an applicable corporation that is subject to the CAMT in 2023.
10. Information Concerning Parent, Subsidiaries, Affiliates and Other Related Parties
 - B. On March 23, 2023, we paid an ordinary dividend of \$11.3 million to our Parent, Mortgage Guaranty Insurance Corporation (“MGIC”). The dividend paid consisted of cash and investment securities.
 - C. – O. No significant changes
 11. Debt – not applicable
 12. Retirement Plans, Deferred Compensation, Postemployment Benefits and Compensated Absences and Other Postretirement Benefit Plans – no significant changes
 13. Capital and Surplus, Dividend Restrictions and Quasi-Reorganizations
 - A. No significant changes
 - B. No significant changes
 - C. No significant changes
 - D. We paid an ordinary dividend to MGIC of \$11.3 million on March 23, 2023.
 - E. – M. No significant changes
 14. Liabilities, Contingencies and Assessments – not applicable
 15. Leases – not applicable
 16. Information About Financial Instruments with Off-Balance Sheet Risk and Financial Instruments with Concentrations of Credit Risk – not applicable
 17. Sale, Transfer and Servicing of Financial Assets and Extinguishments of Liabilities – not applicable
 18. Gain or Loss to the Reporting Entity from Uninsured Plans and the Uninsured Portion of Partially Insured Plans – not applicable
 19. Direct Premium Written/Produced by Managing General Agents/Third Party Administrators – not applicable
 20. Fair Value Measurement
 - A. Assets and Liabilities Measured and Reported at Fair Value
 - (1) Fair Value Measurements at Reporting Date

We applied the following fair value hierarchy in order to measure fair value for assets and liabilities:

Level 1 – Quoted prices for identical instruments in active markets that we can access.

Level 2 – Quoted prices for similar instruments in active markets that we can access; quoted prices for identical or similar instruments in markets that are not active; and inputs, other than quoted prices, that are observable in the marketplace for the instrument. The observable inputs are used in valuation models to calculate the fair value of the instruments.

Level 3 – Valuations derived from valuation techniques in which one or more significant inputs or value drivers are unobservable. The inputs used to derive the fair value of Level 3 securities reflect our own assumptions about the assumptions a market participant would use in pricing an asset or liability.

Fair value measurements at reporting date:

	(Level 1)	(Level 2)	(Level 3)	Net Asset Value (NAV)	Total
a. Assets at fair value					
Cash equivalents - Money market mutual funds	\$ 8,399,155	\$ -	\$ -	\$ -	\$ 8,399,155
Total assets at fair value	\$ 8,399,155	\$ -	\$ -	\$ -	\$ 8,399,155
b. Liabilities at fair value					
Total liabilities at fair value	\$ -	\$ -	\$ -	\$ -	\$ -

(2) Fair Value Measurements in (Level 3) of the Fair Value hierarchy – not applicable

(3) Policy on Transfers Into and Out of Level 3

At the end of each reporting period, we evaluate whether or not any event has occurred, or circumstances have changed that would cause a security to be transferred into or out of Level 3. During the period ended March 31, 2023, there were no transfers into or out of Level 3.

(4) Inputs and Techniques Used for Level 2 Fair Values

We use independent pricing sources to determine the fair value of our financial instruments, which primarily consist of assets in our bond portfolio, but also includes amounts in cash and cash equivalents and restricted cash. A variety of inputs are used; in approximate order of priority, they are: benchmark yields, reported trades, broker/dealer quotes, issuer spreads, two-sided markets, benchmark securities, bids, offers, and reference data including market research publications. Market indicators, industry and economic events are also considered. This information is evaluated using a multidimensional pricing model. This model combines all inputs to arrive at a value assigned to each security. Quality controls are performed by the independent pricing sources throughout this process, which include reviewing tolerance reports, trading information, data changes, and directional moves compared to market moves.

On a quarterly basis, we perform quality controls over values received from the pricing sources which also include reviewing tolerance reports, data changes, and directional moves compared to market moves. We have not made any adjustments to the prices obtained from the independent pricing sources.

To determine the fair value of financial instruments in Level 1 and 2 of the fair value hierarchy, independent pricing sources, as described above, have been used. One price is provided per security based on observable market data. To ensure securities are appropriately classified in the fair value hierarchy, we review the pricing techniques and methodologies of the independent pricing sources and believe that their policies adequately consider market activity, either based on specific transactions for the issue valued or based on modeling of securities with similar credit quality, duration, yield and structure that were recently traded.

STATEMENT AS OF MARCH 31, 2023 OF THE MGIC INDEMNITY CORPORATION

B. Other Fair Value Disclosures – not applicable

C. Aggregate Fair Value for All Financial Instruments

The following tables set forth the aggregate fair values, admitted asset values and level of fair value amounts for financial instruments held as of March 31, 2023 and December 31, 2022:

March 31, 2023	Aggregate Fair Value	Admitted Asset Value	Level 1	Level 2	Level 3	Net Asset Value (NAV)	Not Practicable (Carrying Value)
Bonds	\$ 132,276,308	\$ 148,585,718	\$ 11,874,696	\$ 120,401,612	\$ -	\$ -	\$ -
Cash equivalents	8,399,155	8,399,155	8,399,155	-	-	-	-

December 31, 2022	Aggregate Fair Value	Admitted Asset Value	Level 1	Level 2	Level 3	Net Asset Value (NAV)	Not Practicable (Carrying Value)
Bonds	\$ 139,982,901	\$ 160,776,581	\$ 11,610,472	\$ 128,372,429	\$ -	\$ -	\$ -
Cash equivalents	6,391,650	6,391,650	6,391,650	-	-	-	-

See Note 20A(4) for information on the determination of the fair value of Level 1 and Level 2 financial instruments.

D. Not Practicable to Estimate Fair Value - not applicable

21. Other Items – not applicable

22. Events Subsequent

We have considered subsequent events through May 10, 2023.

23. Reinsurance – no significant changes

24. Retrospectively Rated Contracts & Contracts Subject to Redetermination – not applicable

25. Change in Incurred Losses and Loss Adjustment Expenses

A. Reserves as of December 31, 2022 were \$320 thousand. As of March 31, 2023, we recovered \$12 thousand for incurred losses and loss adjustment expenses attributable to insured events of prior years. Reserves remaining for prior years are now \$211 thousand as a result of re-estimation of unpaid claims and claim adjustment expenses. Therefore, there has been \$121 thousand of favorable prior year development from December 31, 2022 to March 31, 2023. The decrease is generally the result of ongoing analysis of recent loss development trends. Original estimates are increased or decreased as additional information becomes known. We did not adjust premiums based on past claim activity.

B. Not applicable

26. Inter-company Pooling Arrangements – not applicable

27. Structured Settlements – not applicable

28. Health Care Receivables – not applicable

29. Participating Policies – not applicable

30. Premium Deficiency Reserves – no significant changes

31. High Deductibles - not applicable

32. Discounting of Liabilities for Unpaid Losses or Unpaid Loss Adjustment Expenses - not applicable

33. Asbestos/Environmental Reserves - not applicable

34. Subscriber Savings Accounts - not applicable

35. Multiple Peril Crop Insurance - not applicable

36. Financial Guaranty Insurance – not applicable

STATEMENT AS OF MARCH 31, 2023 OF THE MGIC INDEMNITY CORPORATION
GENERAL INTERROGATORIES

PART 1 - COMMON INTERROGATORIES

GENERAL

- 1.1 Did the reporting entity experience any material transactions requiring the filing of Disclosure of Material Transactions with the State of Domicile, as required by the Model Act? Yes [] No [X]
- 1.2 If yes, has the report been filed with the domiciliary state? Yes [] No []
- 2.1 Has any change been made during the year of this statement in the charter, by-laws, articles of incorporation, or deed of settlement of the reporting entity? Yes [] No [X]
- 2.2 If yes, date of change:
- 3.1 Is the reporting entity a member of an Insurance Holding Company System consisting of two or more affiliated persons, one or more of which is an insurer? Yes [X] No []
 If yes, complete Schedule Y, Parts 1 and 1A.
- 3.2 Have there been any substantial changes in the organizational chart since the prior quarter end? Yes [] No [X]
- 3.3 If the response to 3.2 is yes, provide a brief description of those changes.

- 3.4 Is the reporting entity publicly traded or a member of a publicly traded group? Yes [X] No []
- 3.5 If the response to 3.4 is yes, provide the CIK (Central Index Key) code issued by the SEC for the entity/group. 0000876437
- 4.1 Has the reporting entity been a party to a merger or consolidation during the period covered by this statement? Yes [] No [X]
- 4.2 If yes, provide the name of the entity, NAIC Company Code, and state of domicile (use two letter state abbreviation) for any entity that has ceased to exist as a result of the merger or consolidation.

1 Name of Entity	2 NAIC Company Code	3 State of Domicile

5. If the reporting entity is subject to a management agreement, including third-party administrator(s), managing general agent(s), attorney-in-fact, or similar agreement, have there been any significant changes regarding the terms of the agreement or principals involved? Yes [] No [X] N/A []
 If yes, attach an explanation.

- 6.1 State as of what date the latest financial examination of the reporting entity was made or is being made. 12/31/2021
- 6.2 State the as of date that the latest financial examination report became available from either the state of domicile or the reporting entity. This date should be the date of the examined balance sheet and not the date the report was completed or released. 12/31/2021
- 6.3 State as of what date the latest financial examination report became available to other states or the public from either the state of domicile or the reporting entity. This is the release date or completion date of the examination report and not the date of the examination (balance sheet date). 03/06/2023
- 6.4 By what department or departments?
 Office of the Commissioner of Insurance of the State of Wisconsin
- 6.5 Have all financial statement adjustments within the latest financial examination report been accounted for in a subsequent financial statement filed with Departments? Yes [] No [] N/A [X]
- 6.6 Have all of the recommendations within the latest financial examination report been complied with? Yes [] No [] N/A [X]
- 7.1 Has this reporting entity had any Certificates of Authority, licenses or registrations (including corporate registration, if applicable) suspended or revoked by any governmental entity during the reporting period? Yes [] No [X]
- 7.2 If yes, give full information:

- 8.1 Is the company a subsidiary of a bank holding company regulated by the Federal Reserve Board? Yes [] No [X]
- 8.2 If response to 8.1 is yes, please identify the name of the bank holding company.

- 8.3 Is the company affiliated with one or more banks, thrifts or securities firms? Yes [] No [X]
- 8.4 If response to 8.3 is yes, please provide below the names and location (city and state of the main office) of any affiliates regulated by a federal regulatory services agency [i.e. the Federal Reserve Board (FRB), the Office of the Comptroller of the Currency (OCC), the Federal Deposit Insurance Corporation (FDIC) and the Securities Exchange Commission (SEC)] and identify the affiliate's primary federal regulator.

1 Affiliate Name	2 Location (City, State)	3 FRB	4 OCC	5 FDIC	6 SEC

STATEMENT AS OF MARCH 31, 2023 OF THE MGIC INDEMNITY CORPORATION
GENERAL INTERROGATORIES

- 9.1 Are the senior officers (principal executive officer, principal financial officer, principal accounting officer or controller, or persons performing similar functions) of the reporting entity subject to a code of ethics, which includes the following standards? Yes [X] No []
- (a) Honest and ethical conduct, including the ethical handling of actual or apparent conflicts of interest between personal and professional relationships;
- (b) Full, fair, accurate, timely and understandable disclosure in the periodic reports required to be filed by the reporting entity;
- (c) Compliance with applicable governmental laws, rules and regulations;
- (d) The prompt internal reporting of violations to an appropriate person or persons identified in the code; and
- (e) Accountability for adherence to the code.
- 9.11 If the response to 9.1 is No, please explain:
- 9.2 Has the code of ethics for senior managers been amended? Yes [] No [X]
- 9.21 If the response to 9.2 is Yes, provide information related to amendment(s).
- 9.3 Have any provisions of the code of ethics been waived for any of the specified officers? Yes [] No [X]
- 9.31 If the response to 9.3 is Yes, provide the nature of any waiver(s).

FINANCIAL

- 10.1 Does the reporting entity report any amounts due from parent, subsidiaries or affiliates on Page 2 of this statement? Yes [] No [X]
- 10.2 If yes, indicate any amounts receivable from parent included in the Page 2 amount: \$

INVESTMENT

- 11.1 Were any of the stocks, bonds, or other assets of the reporting entity loaned, placed under option agreement, or otherwise made available for use by another person? (Exclude securities under securities lending agreements.) Yes [] No [X]
- 11.2 If yes, give full and complete information relating thereto:
12. Amount of real estate and mortgages held in other invested assets in Schedule BA: \$
13. Amount of real estate and mortgages held in short-term investments: \$
- 14.1 Does the reporting entity have any investments in parent, subsidiaries and affiliates? Yes [] No [X]
- 14.2 If yes, please complete the following:

	1 Prior Year-End Book/Adjusted Carrying Value	2 Current Quarter Book/Adjusted Carrying Value
14.21 Bonds	\$	\$
14.22 Preferred Stock	\$	\$
14.23 Common Stock	\$	\$
14.24 Short-Term Investments	\$	\$
14.25 Mortgage Loans on Real Estate	\$	\$
14.26 All Other	\$	\$
14.27 Total Investment in Parent, Subsidiaries and Affiliates (Subtotal Lines 14.21 to 14.26)	\$	\$
14.28 Total Investment in Parent included in Lines 14.21 to 14.26 above	\$	\$

- 15.1 Has the reporting entity entered into any hedging transactions reported on Schedule DB? Yes [] No [X]
- 15.2 If yes, has a comprehensive description of the hedging program been made available to the domiciliary state? Yes [] No [] N/A []
 If no, attach a description with this statement.
16. For the reporting entity's security lending program, state the amount of the following as of the current statement date:
- 16.1 Total fair value of reinvested collateral assets reported on Schedule DL, Parts 1 and 2. \$
- 16.2 Total book/adjusted carrying value of reinvested collateral assets reported on Schedule DL, Parts 1 and 2 \$
- 16.3 Total payable for securities lending reported on the liability page. \$

STATEMENT AS OF MARCH 31, 2023 OF THE MGIC INDEMNITY CORPORATION
GENERAL INTERROGATORIES

17. Excluding items in Schedule E - Part 3 - Special Deposits, real estate, mortgage loans and investments held physically in the reporting entity's offices, vaults or safety deposit boxes, were all stocks, bonds and other securities, owned throughout the current year held pursuant to a custodial agreement with a qualified bank or trust company in accordance with Section 1, III - General Examination Considerations, F. Outsourcing of Critical Functions, Custodial or Safekeeping Agreements of the NAIC Financial Condition Examiners Handbook? Yes [X] No []
- 17.1 For all agreements that comply with the requirements of the NAIC Financial Condition Examiners Handbook, complete the following:

1 Name of Custodian(s)	2 Custodian Address
The Northern Trust Company	50 South LaSalle St, Chicago, IL 60603

- 17.2 For all agreements that do not comply with the requirements of the NAIC Financial Condition Examiners Handbook, provide the name, location and a complete explanation:

1 Name(s)	2 Location(s)	3 Complete Explanation(s)

- 17.3 Have there been any changes, including name changes, in the custodian(s) identified in 17.1 during the current quarter? Yes [] No [X]

- 17.4 If yes, give full information relating thereto:

1 Old Custodian	2 New Custodian	3 Date of Change	4 Reason

- 17.5 Investment management – Identify all investment advisors, investment managers, broker/dealers, including individuals that have the authority to make investment decisions on behalf of the reporting entity. For assets that are managed internally by employees of the reporting entity, note as such. ["...that have access to the investment accounts"; "...handle securities"]

1 Name of Firm or Individual	2 Affiliation
Wellington Management Company, LLP	U.....
Nathan Abramowski	I.....

- 17.5097 For those firms/individuals listed in the table for Question 17.5, do any firms/individuals unaffiliated with the reporting entity (i.e. designated with a "U") manage more than 10% of the reporting entity's invested assets?..... Yes [X] No []

- 17.5098 For firms/individuals unaffiliated with the reporting entity (i.e. designated with a "U") listed in the table for Question 17.5, does the total assets under management aggregate to more than 50% of the reporting entity's invested assets?..... Yes [X] No []

- 17.6 For those firms or individuals listed in the table for 17.5 with an affiliation code of "A" (affiliated) or "U" (unaffiliated), provide the information for the table below.

1	2	3	4	5
Central Registration Depository Number	Name of Firm or Individual	Legal Entity Identifier (LEI)	Registered With	Investment Management Agreement (IMA) Filed
106595	Wellington Management Company, LLP	549300YHP12TEZNLX41	SEC	NO.....

- 18.1 Have all the filing requirements of the Purposes and Procedures Manual of the NAIC Investment Analysis Office been followed? Yes [X] No []

- 18.2 If no, list exceptions:

19. By self-designating 5GI securities, the reporting entity is certifying the following elements for each self-designated 5GI security:
- a. Documentation necessary to permit a full credit analysis of the security does not exist or an NAIC CRP credit rating for an FE or PL security is not available.
 - b. Issuer or obligor is current on all contracted interest and principal payments.
 - c. The insurer has an actual expectation of ultimate payment of all contracted interest and principal.
- Has the reporting entity self-designated 5GI securities? Yes [] No [X]

20. By self-designating PLGI securities, the reporting entity is certifying the following elements of each self-designated PLGI security:
- a. The security was purchased prior to January 1, 2018.
 - b. The reporting entity is holding capital commensurate with the NAIC Designation reported for the security.
 - c. The NAIC Designation was derived from the credit rating assigned by an NAIC CRP in its legal capacity as a NRSRO which is shown on a current private letter rating held by the insurer and available for examination by state insurance regulators.
 - d. The reporting entity is not permitted to share this credit rating of the PL security with the SVO.
- Has the reporting entity self-designated PLGI securities? Yes [] No [X]

21. By assigning FE to a Schedule BA non-registered private fund, the reporting entity is certifying the following elements of each self-designated FE fund:
- a. The shares were purchased prior to January 1, 2019.
 - b. The reporting entity is holding capital commensurate with the NAIC Designation reported for the security.
 - c. The security had a public credit rating(s) with annual surveillance assigned by an NAIC CRP in its legal capacity as an NRSRO prior to January 1, 2019.
 - d. The fund only or predominantly holds bonds in its portfolio.
 - e. The current reported NAIC Designation was derived from the public credit rating(s) with annual surveillance assigned by an NAIC CRP in its legal capacity as an NRSRO.
 - f. The public credit rating(s) with annual surveillance assigned by an NAIC CRP has not lapsed.
- Has the reporting entity assigned FE to Schedule BA non-registered private funds that complied with the above criteria? Yes [] No [X]

STATEMENT AS OF MARCH 31, 2023 OF THE MGIC INDEMNITY CORPORATION

GENERAL INTERROGATORIES

PART 2 - PROPERTY & CASUALTY INTERROGATORIES

1. If the reporting entity is a member of a pooling arrangement, did the agreement or the reporting entity's participation change? Yes [] No [] N/A [X]
If yes, attach an explanation.

2. Has the reporting entity reinsured any risk with any other reporting entity and agreed to release such entity from liability, in whole or in part, from any loss that may occur on the risk, or portion thereof, reinsured? Yes [] No [X]
If yes, attach an explanation.

3.1 Have any of the reporting entity's primary reinsurance contracts been canceled? Yes [] No [X]

3.2 If yes, give full and complete information thereto.

4.1 Are any of the liabilities for unpaid losses and loss adjustment expenses other than certain workers' compensation tabular reserves (see Annual Statement Instructions pertaining to disclosure of discounting for definition of "tabular reserves") discounted at a rate of interest greater than zero? Yes [] No [X]

4.2 If yes, complete the following schedule:

			TOTAL DISCOUNT				DISCOUNT TAKEN DURING PERIOD			
1	2	3	4	5	6	7	8	9	10	11
Line of Business	Maximum Interest	Discount Rate	Unpaid Losses	Unpaid LAE	IBNR	TOTAL	Unpaid Losses	Unpaid LAE	IBNR	TOTAL
TOTAL										

5. Operating Percentages:

5.1 A&H loss percent %

5.2 A&H cost containment percent %

5.3 A&H expense percent excluding cost containment expenses %

6.1 Do you act as a custodian for health savings accounts? Yes [] No [X]

6.2 If yes, please provide the amount of custodial funds held as of the reporting date \$.....

6.3 Do you act as an administrator for health savings accounts? Yes [] No [X]

6.4 If yes, please provide the balance of the funds administered as of the reporting date \$.....

7. Is the reporting entity licensed or chartered, registered, qualified, eligible or writing business in at least two states? Yes [X] No []

7.1 If no, does the reporting entity assume reinsurance business that covers risks residing in at least one state other than the state of domicile of the reporting entity? Yes [] No []

SCHEDULE F - CEDED REINSURANCE

Showing All New Reinsurers - Current Year to Date

1 NAIC Company Code	2 ID Number	3 Name of Reinsurer	4 Domiciliary Jurisdiction	5 Type of Reinsurer	6 Certified Reinsurer Rating (1 through 6)	7 Effective Date of Certified Reinsurer Rating
NONE						

STATEMENT AS OF MARCH 31, 2023 OF THE MGIC INDEMNITY CORPORATION
SCHEDULE T - EXHIBIT OF PREMIUMS WRITTEN

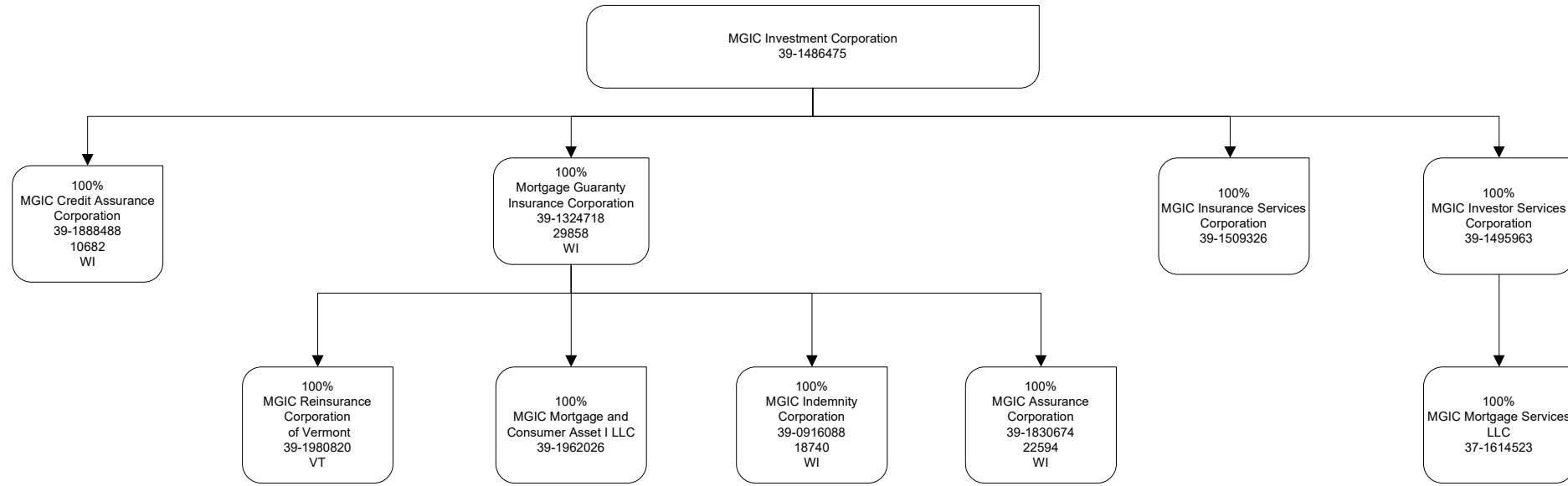
Current Year to Date - Allocated by States and Territories

States, etc.	1 Active Status (a)	Direct Premiums Written		Direct Losses Paid (Deducting Salvage)		Direct Losses Unpaid	
		2 Current Year To Date	3 Prior Year To Date	4 Current Year To Date	5 Prior Year To Date	6 Current Year To Date	7 Prior Year To Date
1. Alabama	AL						23,275
2. Alaska	AK						
3. Arizona	AZ					13,056	
4. Arkansas	AR						
5. California	CA	279	(7,706)			7,340	79,766
6. Colorado	CO						
7. Connecticut	CT						
8. Delaware	DE						
9. District of Columbia	DC						
10. Florida	FL	5,585	13,451			97,495	298,688
11. Georgia	GA					19,268	
12. Hawaii	HI						
13. Idaho	ID	690	(177)				39,824
14. Illinois	IL					41,545	13,627
15. Indiana	IN						
16. Iowa	IA						
17. Kansas	KS						
18. Kentucky	KY						
19. Louisiana	LA					3,669	28,225
20. Maine	ME						
21. Maryland	MD					65,211	29,355
22. Massachusetts	MA						
23. Michigan	MI					13,220	37,523
24. Minnesota	MN						
25. Mississippi	MS					6,348	
26. Missouri	MO	1,279	2,167			37,549	46,911
27. Montana	MT						
28. Nebraska	NE						
29. Nevada	NV					1,692	
30. New Hampshire	NH						
31. New Jersey	NJ	2,522	5,854			140,523	300,545
32. New Mexico	NM						
33. New York	NY	3,173	6,987			204,801	411,894
34. North Carolina	NC	593	5,599				24,633
35. North Dakota	ND						
36. Ohio	OH	2,284	7,258			38,491	115,865
37. Oklahoma	OK						
38. Oregon	OR						45,340
39. Pennsylvania	PA					1,374	
40. Rhode Island	RI						
41. South Carolina	SC						
42. South Dakota	SD						14,011
43. Tennessee	TN	(796)				14,186	14,128
44. Texas	TX	603	2,963			15,010	30,082
45. Utah	UT						
46. Vermont	VT						
47. Virginia	VA	106	(7,100)			274,361	686,089
48. Washington	WA						21,831
49. West Virginia	WV						
50. Wisconsin	WI						
51. Wyoming	WY						
52. American Samoa	AS						
53. Guam	GU						
54. Puerto Rico	PR	4,682	4,841		48,047	139,027	296,998
55. U.S. Virgin Islands	VI						
56. Northern Mariana Islands	MP						
57. Canada	CAN						
58. Aggregate Other Alien	OT						
59. Totals	XXX	21,000	34,137		48,047	1,134,166	2,558,610
DETAILS OF WRITE-INS							
58001.	XXX						
58002.	XXX						
58003.	XXX						
58998. Summary of remaining write-ins for Line 58 from overflow page	XXX						
58999. Totals (Lines 58001 through 58003 plus 58998)(Line 58 above)	XXX						

(a) Active Status Counts:

- | | |
|--|--|
| 1. L - Licensed or Chartered - Licensed insurance carrier or domiciled RRG..... | 52 4. Q - Qualified - Qualified or accredited reinsurer..... |
| 2. R - Registered - Non-domiciled RRGs..... | 5. D - Domestic Surplus Lines Insurer (DSLII) - Reporting entities authorized to write surplus lines in the state of domicile..... |
| 3. E - Eligible - Reporting entities eligible or approved to write surplus lines in the state (other than their state of domicile - see DSLI)..... | 6. N - None of the above - Not allowed to write business in the state..... |
- NOTE: Primary premiums are allocated by state based on the location of the insured property. Pool premiums are allocated based on the location of the insured.

SCHEDULE Y - INFORMATION CONCERNING ACTIVITIES OF INSURER MEMBERS OF A HOLDING COMPANY GROUP
PART 1 - ORGANIZATIONAL CHART



STATEMENT AS OF MARCH 31, 2023 OF THE MGIC INDEMNITY CORPORATION

SCHEDULE Y
PART 1A - DETAIL OF INSURANCE HOLDING COMPANY SYSTEM

1	2	3	4	5	6	7	8	9	10	11	12	13	14	15	16
Group Code	Group Name	NAIC Company Code	ID Number	Federal RSSD	CIK	Name of Securities Exchange if Publicly Traded (U.S. or International)	Names of Parent, Subsidiaries Or Affiliates	Domiciliary Location	Relationship to Reporting Entity	Directly Controlled by (Name of Entity/Person)	Type of Control (Ownership, Board, Management, Attorney-in-Fact, Influence, Other)	If Control is Ownership Provide Percentage	Ultimate Controlling Entity(ies)/Person(s)	Is an SCA Filing Required? (Yes/No)	*
. 0105 ...	MGIC Group 00000	39-1486475	876437	New York Stock Exchange ..	MGIC Investment Corporation WI..... UIP.....	Ownership.....	100.000 NO.....
. 0105 ...	MGIC Group 29858	39-1324718	Mortgage Guaranty Insurance Corporation WI..... UDP.....	MGIC Investment Corporation	Ownership.....	100.000 ...	MGIC Investment Corporation NO.....
. 0105 ...	MGIC Group 00000	39-1509326	MGIC Insurance Services Corporation WI..... NIA.....	MGIC Investment Corporation	Ownership.....	100.000 ...	MGIC Investment Corporation NO.....
. 0105 ...	MGIC Group 00000	39-1495963	MGIC Investor Services Corporation WI..... NIA.....	MGIC Investment Corporation	Ownership.....	100.000 ...	MGIC Investment Corporation NO.....
. 0105 ...	MGIC Group 18740	39-0916088	MGIC Indemnity Corporation WI..... RE.....	Mortgage Guaranty Insurance Corporation ..	Ownership.....	100.000 ...	MGIC Investment Corporation NO.....
. 0105 ...	MGIC Group 10682	39-1888488	MGIC Credit Assurance Corporation WI..... IA.....	MGIC Investment Corporation	Ownership.....	100.000 ...	MGIC Investment Corporation NO.....
. 0105 ...	MGIC Group 22594	39-1830674	MGIC Assurance Corporation WI..... IA.....	Mortgage Guaranty Insurance Corporation ..	Ownership.....	100.000 ...	MGIC Investment Corporation NO.....
. 0105 ...	MGIC Group 00000	39-1980820	MGIC Reinsurance Corporation of Vermont VT..... IA.....	Mortgage Guaranty Insurance Corporation ..	Ownership.....	100.000 ...	MGIC Investment Corporation NO.....
. 0105 ...	MGIC Group 00000	39-1962026	MGIC Mortgage and Consumer Asset I LLC DE..... NIA.....	Mortgage Guaranty Insurance Corporation ..	Ownership.....	100.000 ...	MGIC Investment Corporation NO.....
. 0105 ...	MGIC Group 00000	37-1614523	MGIC Mortgage Services LLC WI..... NIA.....	MGIC Investor Services Corporation	Ownership.....	100.000 ...	MGIC Investment Corporation NO.....

Asterisk	Explanation
----------	-------------

STATEMENT AS OF MARCH 31, 2023 OF THE MGIC INDEMNITY CORPORATION

PART 1 - LOSS EXPERIENCE

Line of Business	Current Year to Date			4 Prior Year to Date Direct Loss Percentage
	1 Direct Premiums Earned	2 Direct Losses Incurred	3 Direct Loss Percentage	
1. Fire				
2.1 Allied Lines				
2.2 Multiple peril crop				
2.3 Federal flood				
2.4 Private crop				
2.5 Private flood				
3. Farmowners multiple peril				
4. Homeowners multiple peril				
5.1 Commercial multiple peril (non-liability portion)				
5.2 Commercial multiple peril (liability portion)				
6. Mortgage guaranty	349,642	(180,665)	(51.7)	7.0
8. Ocean marine				
9. Inland marine				
10. Financial guaranty				
11.1 Medical professional liability - occurrence				
11.2 Medical professional liability - claims-made				
12. Earthquake				
13.1 Comprehensive (hospital and medical) individual				
13.2 Comprehensive (hospital and medical) group				
14. Credit accident and health				
15.1 Vision only				
15.2 Dental only				
15.3 Disability income				
15.4 Medicare supplement				
15.5 Medicaid Title XIX				
15.6 Medicare Title XVIII				
15.7 Long-term care				
15.8 Federal employees health benefits plan				
15.9 Other health				
16. Workers' compensation				
17.1 Other liability - occurrence				
17.2 Other liability - claims-made				
17.3 Excess workers' compensation				
18.1 Products liability - occurrence				
18.2 Products liability - claims-made				
19.1 Private passenger auto no-fault (personal injury protection)				
19.2 Other private passenger auto liability				
19.3 Commercial auto no-fault (personal injury protection)				
19.4 Other commercial auto liability				
21.1 Private passenger auto physical damage				
21.2 Commercial auto physical damage				
22. Aircraft (all perils)				
23. Fidelity				
24. Surety				
26. Burglary and theft				
27. Boiler and machinery				
28. Credit				
29. International				
30. Warranty				
31. Reinsurance - Nonproportional Assumed Property	XXX	XXX	XXX	XXX
32. Reinsurance - Nonproportional Assumed Liability	XXX	XXX	XXX	XXX
33. Reinsurance - Nonproportional Assumed Financial Lines	XXX	XXX	XXX	XXX
34. Aggregate write-ins for other lines of business				
35. Totals	349,642	(180,665)	(51.7)	7.0
DETAILS OF WRITE-INS				
3401.				
3402.				
3403.				
3498. Summary of remaining write-ins for Line 34 from overflow page				
3499. Totals (Lines 3401 through 3403 plus 3498)(Line 34 above)				

STATEMENT AS OF MARCH 31, 2023 OF THE MGIC INDEMNITY CORPORATION

PART 2 - DIRECT PREMIUMS WRITTEN

Line of Business		1 Current Quarter	2 Current Year to Date	3 Prior Year Year to Date
1.	Fire			
2.1	Allied Lines			
2.2	Multiple peril crop			
2.3	Federal flood			
2.4	Private crop			
2.5	Private flood			
3.	Farmowners multiple peril			
4.	Homeowners multiple peril			
5.1	Commercial multiple peril (non-liability portion)			
5.2	Commercial multiple peril (liability portion)			
6.	Mortgage guaranty	21,000	21,000	34,137
8.	Ocean marine			
9.	Inland marine			
10.	Financial guaranty			
11.1	Medical professional liability - occurrence			
11.2	Medical professional liability - claims-made			
12.	Earthquake			
13.1	Comprehensive (hospital and medical) individual			
13.2	Comprehensive (hospital and medical) group			
14.	Credit accident and health			
15.1	Vision only			
15.2	Dental only			
15.3	Disability income			
15.4	Medicare supplement			
15.5	Medicaid Title XIX			
15.6	Medicare Title XVIII			
15.7	Long-term care			
15.8	Federal employees health benefits plan			
15.9	Other health			
16.	Workers' compensation			
17.1	Other liability - occurrence			
17.2	Other liability - claims-made			
17.3	Excess workers' compensation			
18.1	Products liability - occurrence			
18.2	Products liability - claims-made			
19.1	Private passenger auto no-fault (personal injury protection)			
19.2	Other private passenger auto liability			
19.3	Commercial auto no-fault (personal injury protection)			
19.4	Other commercial auto liability			
21.1	Private passenger auto physical damage			
21.2	Commercial auto physical damage			
22.	Aircraft (all perils)			
23.	Fidelity			
24.	Surety			
26.	Burglary and theft			
27.	Boiler and machinery			
28.	Credit			
29.	International			
30.	Warranty			
31.	Reinsurance - Nonproportional Assumed Property	XXX	XXX	XXX
32.	Reinsurance - Nonproportional Assumed Liability	XXX	XXX	XXX
33.	Reinsurance - Nonproportional Assumed Financial Lines	XXX	XXX	XXX
34.	Aggregate write-ins for other lines of business			
35.	Totals	21,000	21,000	34,137
DETAILS OF WRITE-INS				
3401.			
3402.			
3403.			
3498.	Summary of remaining write-ins for Line 34 from overflow page			
3499.	Totals (Lines 3401 through 3403 plus 3498)(Line 34 above)			

STATEMENT AS OF MARCH 31, 2023 OF THE MGIC INDEMNITY CORPORATION

PART 3 (000 omitted)

LOSS AND LOSS ADJUSTMENT EXPENSE RESERVES SCHEDULE

	1	2	3	4	5	6	7	8	9	10	11	12	13
Years in Which Losses Occurred	Prior Year-End Known Case Loss and LAE Reserves	Prior Year-End IBNR Loss and LAE Reserves	Total Prior Year-End Loss and LAE Reserves (Cols. 1+2)	2023 Loss and LAE Payments on Claims Reported as of Prior Year-End	2023 Loss and LAE Payments on Claims Unreported as of Prior Year-End	Total 2023 Loss and LAE Payments (Cols. 4+5)	Q.S. Date Known Case Loss and LAE Reserves on Claims Reported and Open as of Prior Year End	Q.S. Date Known Case Loss and LAE Reserves on Claims Reported or Reopened Subsequent to Prior Year End	Q.S. Date IBNR Loss and LAE Reserves	Total Q.S. Loss and LAE Reserves (Cols.7+8+9)	Prior Year-End Known Case Loss and LAE Reserves Developed (Savings)/ Deficiency (Cols.4+7 minus Col. 1)	Prior Year-End IBNR Loss and LAE Reserves Developed (Savings)/ Deficiency (Cols. 5+8+9 minus Col. 2)	Prior Year-End Total Loss and LAE Reserve Developed (Savings)/ Deficiency (Cols. 11+12)
1. 2020 + Prior	3		3	(12)		(12)	2			2	(13)		(13)
2. 2021	152		152				48			48	(104)		(104)
3. Subtotals 2021 + Prior	155		155	(12)		(12)	50			50	(117)		(117)
4. 2022	156	9	165				62	99		161	(94)	90	(4)
5. Subtotals 2022 + Prior	311	9	320	(12)		(12)	112	99		211	(211)	90	(121)
6. 2023	XXX	XXX	XXX	XXX			XXX	7	2	9	XXX	XXX	XXX
7. Totals	311	9	320	(12)		(12)	112	106	2	220	(211)	90	(121)
8. Prior Year-End Surplus As Regards Policyholders	113,637										Col. 11, Line 7 As % of Col. 1 Line 7	Col. 12, Line 7 As % of Col. 2 Line 7	Col. 13, Line 7 As % of Col. 3 Line 7
											1. (67.8)	2. 1,000.0	3. (37.8)
													Col. 13, Line 7 As a % of Col. 1 Line 8
													4. (0.1)

SUPPLEMENTAL EXHIBITS AND SCHEDULES INTERROGATORIES

The following supplemental reports are required to be filed as part of your statement filing. However, in the event that your company does not transact the type of business for which the special report must be filed, your response of NO to the specific interrogatory will be accepted in lieu of filing a "NONE" report and a bar code will be printed below. If the supplement is required of your company but is not being filed for whatever reason enter SEE EXPLANATION and provide an explanation following the interrogatory questions.

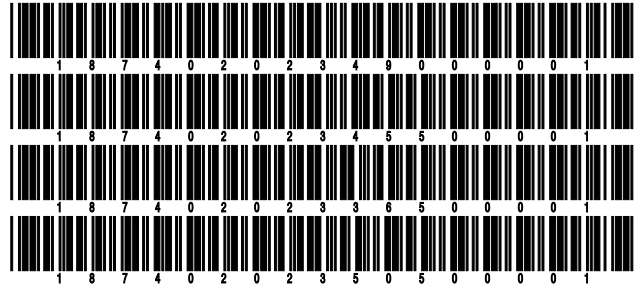
	Response
1. Will the Trusteed Surplus Statement be filed with the state of domicile and the NAIC with this statement?	NO
2. Will Supplement A to Schedule T (Medical Professional Liability Supplement) be filed with this statement?	NO
3. Will the Medicare Part D Coverage Supplement be filed with the state of domicile and the NAIC with this statement?	NO
4. Will the Director and Officer Insurance Coverage Supplement be filed with the state of domicile and the NAIC with this statement?	NO
AUGUST FILING	
5. Will the regulator-only (non-public) Communication of Internal Control Related Matters Noted in Audit be filed with the state of domicile and electronically with the NAIC (as a regulator-only non-public document) by August 1? The response for 1st and 3rd quarters should be N/A. A NO response resulting with a bar code is only appropriate in the 2nd quarter.	N/A

Explanations:

- 1.
- 2.
- 3.
- 4.

Bar Codes:

1. Trusteed Surplus Statement [Document Identifier 490]
2. Supplement A to Schedule T [Document Identifier 455]
3. Medicare Part D Coverage Supplement [Document Identifier 365]
4. Director and Officer Supplement [Document Identifier 505]



STATEMENT AS OF MARCH 31, 2023 OF THE MGIC INDEMNITY CORPORATION

SCHEDULE A - VERIFICATION

Real Estate

	1 Year to Date	2 Prior Year Ended December 31
1. Book/adjusted carrying value, December 31 of prior year		
2. Cost of acquired:		
2.1 Actual cost at time of acquisition		
2.2 Additional investment made after acquisition		
3. Current year change in encumbrances		
4. Total gain (loss) on disposals		
5. Deduct amounts received on disposals		
6. Total foreign exchange change in book/adjusted carrying value		
7. Deduct current year's other than temporary impairment recognized		
8. Deduct current year's depreciation		
9. Book/adjusted carrying value at the end of current period (Lines 1+2+3+4-5+6-7-8)		
10. Deduct total nonadmitted amounts		
11. Statement value at end of current period (Line 9 minus Line 10)		

NONE

SCHEDULE B - VERIFICATION

Mortgage Loans

	1 Year to Date	2 Prior Year Ended December 31
1. Book value/recorded investment excluding accrued interest, December 31 of prior year		
2. Cost of acquired:		
2.1 Actual cost at time of acquisition		
2.2 Additional investment made after acquisition		
3. Capitalized deferred interest and other		
4. Accrual of discount		
5. Unrealized valuation increase (decrease)		
6. Total gain (loss) on disposals		
7. Deduct amounts received on disposals		
8. Deduct amortization of premium and mortgage interest paid and commitment fees		
9. Total foreign exchange change in book value/recorded investment excluding accrued interest		
10. Deduct current year's other than temporary impairment recognized		
11. Book value/recorded investment excluding accrued interest at end of current period (Lines 1+2+3+4+5+6-7-8+9-10)		
12. Total valuation allowance		
13. Subtotal (Line 11 plus Line 12)		
14. Deduct total nonadmitted amounts		
15. Statement value at end of current period (Line 13 minus Line 14)		

NONE

SCHEDULE BA - VERIFICATION

Other Long-Term Invested Assets

	1 Year to Date	2 Prior Year Ended December 31
1. Book/adjusted carrying value, December 31 of prior year		
2. Cost of acquired:		
2.1 Actual cost at time of acquisition		
2.2 Additional investment made after acquisition		
3. Capitalized deferred interest and other		
4. Accrual of discount		
5. Unrealized valuation increase (decrease)		
6. Total gain (loss) on disposals		
7. Deduct amounts received on disposals		
8. Deduct amortization of premium and depreciation		
9. Total foreign exchange change in book/adjusted carrying value		
10. Deduct current year's other than temporary impairment recognized		
11. Book/adjusted carrying value at end of current period (Lines 1+2+3+4+5+6-7-8+9-10)		
12. Deduct total nonadmitted amounts		
13. Statement value at end of current period (Line 11 minus Line 12)		

NONE

SCHEDULE D - VERIFICATION

Bonds and Stocks

	1 Year to Date	2 Prior Year Ended December 31
1. Book/adjusted carrying value of bonds and stocks, December 31 of prior year	160,776,581	157,734,033
2. Cost of bonds and stocks acquired	5,020,025	27,004,863
3. Accrual of discount	24,702	55,857
4. Unrealized valuation increase (decrease)		
5. Total gain (loss) on disposals	(704,616)	(2,804)
6. Deduct consideration for bonds and stocks disposed of	16,381,038	23,391,084
7. Deduct amortization of premium	149,936	610,615
8. Total foreign exchange change in book/adjusted carrying value		
9. Deduct current year's other than temporary impairment recognized		
10. Total investment income recognized as a result of prepayment penalties and/or acceleration fees		(13,669)
11. Book/adjusted carrying value at end of current period (Lines 1+2+3+4+5-6-7+8-9+10)	148,585,718	160,776,581
12. Deduct total nonadmitted amounts		
13. Statement value at end of current period (Line 11 minus Line 12)	148,585,718	160,776,581

STATEMENT AS OF MARCH 31, 2023 OF THE MGIC INDEMNITY CORPORATION

SCHEDULE D - PART 1B

Showing the Acquisitions, Dispositions and Non-Trading Activity
During the Current Quarter for all Bonds and Preferred Stock by NAIC Designation

NAIC Designation	1 Book/Adjusted Carrying Value Beginning of Current Quarter	2 Acquisitions During Current Quarter	3 Dispositions During Current Quarter	4 Non-Trading Activity During Current Quarter	5 Book/Adjusted Carrying Value End of First Quarter	6 Book/Adjusted Carrying Value End of Second Quarter	7 Book/Adjusted Carrying Value End of Third Quarter	8 Book/Adjusted Carrying Value December 31 Prior Year
BONDS								
1. NAIC 1 (a)	114,049,472	5,020,025	5,399,165	(1,756,805)	111,913,527			114,049,472
2. NAIC 2 (a)	46,727,109		11,686,490	1,631,572	36,672,191			46,727,109
3. NAIC 3 (a)								
4. NAIC 4 (a)								
5. NAIC 5 (a)								
6. NAIC 6 (a)								
7. Total Bonds	160,776,581	5,020,025	17,085,655	(125,233)	148,585,718			160,776,581
PREFERRED STOCK								
8. NAIC 1								
9. NAIC 2								
10. NAIC 3								
11. NAIC 4								
12. NAIC 5								
13. NAIC 6								
14. Total Preferred Stock								
15. Total Bonds and Preferred Stock	160,776,581	5,020,025	17,085,655	(125,233)	148,585,718			160,776,581

(a) Book/Adjusted Carrying Value column for the end of the current reporting period includes the following amount of short-term and cash equivalent bonds by NAIC designation:

NAIC 1 \$; NAIC 2 \$; NAIC 3 \$ NAIC 4 \$; NAIC 5 \$; NAIC 6 \$

S102

Schedule DA - Part 1 - Short-Term Investments

N O N E

Schedule DA - Verification - Short-Term Investments

N O N E

Schedule DB - Part A - Verification - Options, Caps, Floors, Collars, Swaps and Forwards

N O N E

Schedule DB - Part B - Verification - Futures Contracts

N O N E

Schedule DB - Part C - Section 1 - Replication (Synthetic Asset) Transactions (RSATs) Open

N O N E

Schedule DB-Part C-Section 2-Reconciliation of Replication (Synthetic Asset) Transactions Open

N O N E

Schedule DB - Verification - Book/Adjusted Carrying Value, Fair Value and Potential Exposure of
Derivatives

N O N E

STATEMENT AS OF MARCH 31, 2023 OF THE MGIC INDEMNITY CORPORATION

SCHEDULE E - PART 2 - VERIFICATION

(Cash Equivalents)

	1	2
	Year To Date	Prior Year Ended December 31
1. Book/adjusted carrying value, December 31 of prior year	6,391,650	2,792,851
2. Cost of cash equivalents acquired	12,557,237	31,380,245
3. Accrual of discount		
4. Unrealized valuation increase (decrease)	(456)	
5. Total gain (loss) on disposals	(14)	(324)
6. Deduct consideration received on disposals	10,549,262	27,781,122
7. Deduct amortization of premium		
8. Total foreign exchange change in book/adjusted carrying value		
9. Deduct current year's other than temporary impairment recognized		
10. Book/adjusted carrying value at end of current period (Lines 1+2+3+4+5-6-7+8-9)	8,399,155	6,391,650
11. Deduct total nonadmitted amounts		
12. Statement value at end of current period (Line 10 minus Line 11)	8,399,155	6,391,650

Schedule A - Part 2 - Real Estate Acquired and Additions Made

N O N E

Schedule A - Part 3 - Real Estate Disposed

N O N E

Schedule B - Part 2 - Mortgage Loans Acquired and Additions Made

N O N E

Schedule B - Part 3 - Mortgage Loans Disposed, Transferred or Repaid

N O N E

Schedule BA - Part 2 - Other Long-Term Invested Assets Acquired and Additions Made

N O N E

Schedule BA - Part 3 - Other Long-Term Invested Assets Disposed, Transferred or Repaid

N O N E

STATEMENT AS OF MARCH 31, 2023 OF THE MGIC INDEMNITY CORPORATION

SCHEDULE D - PART 3

Show All Long-Term Bonds and Stock Acquired During the Current Quarter

1	2	3	4	5	6	7	8	9	10
CUSIP Identification	Description	Foreign	Date Acquired	Name of Vendor	Number of Shares of Stock	Actual Cost	Par Value	Paid for Accrued Interest and Dividends	NAIC Designation, NAIC Designation Modifier and SVO Administrative Symbol
913366-EQ-9	University Calif Regts POOLED REV BDS 2010H 6.398% 05/15/31		01/20/2023	J.P. Morgan		2,176,740	2,000,000	24,526	1.D FE
91412H-FU-2	UNIVERSITY CALIF REVS TAXABLE GEN BDS 2020 1.964% 05/15/32		01/10/2023	Goldman Sachs & Co.		588,285	750,000	2,332	1.C FE
0909999999. Subtotal - Bonds - U.S. Special Revenues						2,765,025	2,750,000	26,858	XXX
92212K-AE-6	Vantage Data Centers LLC 6.316% 03/16/48		03/15/2023	Deutsche Bank Sec		2,255,000	2,255,000		1.G FE
1109999999. Subtotal - Bonds - Industrial and Miscellaneous (Unaffiliated)						2,255,000	2,255,000		XXX
2509999997. Total - Bonds - Part 3						5,020,025	5,005,000	26,858	XXX
2509999998. Total - Bonds - Part 5						XXX	XXX	XXX	XXX
2509999999. Total - Bonds						5,020,025	5,005,000	26,858	XXX
4509999997. Total - Preferred Stocks - Part 3							XXX		XXX
4509999998. Total - Preferred Stocks - Part 5						XXX	XXX	XXX	XXX
4509999999. Total - Preferred Stocks							XXX		XXX
5989999997. Total - Common Stocks - Part 3							XXX		XXX
5989999998. Total - Common Stocks - Part 5						XXX	XXX	XXX	XXX
5989999999. Total - Common Stocks							XXX		XXX
5999999999. Total - Preferred and Common Stocks							XXX		XXX
6009999999 - Totals						5,020,025	XXX	26,858	XXX

STATEMENT AS OF MARCH 31, 2023 OF THE MGIC INDEMNITY CORPORATION

SCHEDULE D - PART 4

Show All Long-Term Bonds and Stock Sold, Redeemed or Otherwise Disposed of During the Current Quarter

1	2	3	4	5	6	7	8	9	10	Change In Book/Adjusted Carrying Value					16	17	18	19	20	21	22	
										11	12	13	14	15								
CUSIP Identification	Description	For- eign	Disposal Date	Name of Purchaser	Number of Shares of Stock	Consid- eration	Par Value	Actual Cost	Prior Year Book/ Adjusted Carrying Value	Unrealized Valuation Increase/ (Decrease)	Current Year's (Amor- tization)/ Accretion	Current Year's Other Than Temporary Impairment Recogn- ized	Total Change in Book/ Adjusted Carrying Value (11 + 12 - 13)	Total Foreign Exchange Change in Book /Adjusted Carrying Value	Book/ Adjusted Carrying Value at Disposal Date	Foreign Exchange Gain (Loss) on Disposal	Realized Gain (Loss) on Disposal	Total Gain (Loss) on Disposal	Bond Interest/ Stock Dividends Received During Year	Stated Con- tractual Maturity Date	NAIC Desig- nation, NAIC Desig- nation Modifier and SVO Admini- strative Symbol	
..36179U-QA-3	Government National Mortgage A G2 MA5849 3.500% 04/20/34		01/01/2023	Paydown		14,745	14,745	15,318	15,230		(485)		(485)		14,745				43	04/20/2034	1.A	
..36179U-QA-3	Government National Mortgage A G2 MA5849 3.500% 04/20/34		02/01/2023	Paydown		15,207	15,207	15,799	15,708		(501)		(501)		15,207				89	04/20/2034	1.A	
..36179U-QA-3	Government National Mortgage A G2 MA5849 3.500% 04/20/34		03/01/2023	Paydown		8,414	8,414	8,741	8,691		(277)		(277)		8,414				74	04/20/2034	1.A	
0109999999. Subtotal - Bonds - U.S. Governments						38,366	38,366	39,858	39,623		(1,263)		(1,263)		38,366				206	XXX	XXX	
..108151-T7-6	Bridgeport Conn Taxable-Pension Bds-AGM-Cr 7.640% 01/15/30		01/15/2023	Redemption	100.0000	55,000	55,000	67,375	60,805		(5,805)		(5,805)		55,000				2,101	01/15/2030	1.E FE	
..108151-T7-6	Bridgeport Conn Taxable-Pension Bds-AGM-Cr 7.640% 01/15/30		03/23/2023	Mortgage Guaranty Insurance Corporation		555,451	500,000	612,500	552,774		2,607		2,607		555,382		70	70	26,316	01/15/2030	1.E FE	
..108151-VU-2	Bridgeport Conn Taxable Pension Bds 7.640% 01/15/30		01/15/2023	Redemption	100.0000	55,000	55,000	68,564	66,271		(11,271)		(11,271)		55,000				2,101	01/15/2030	1.F FE	
..108151-VU-2	Bridgeport Conn Taxable Pension Bds 7.640% 01/15/30		03/23/2023	Mortgage Guaranty Insurance Corporation		587,170	525,000	654,476	632,589		5,148		5,148		637,737		(50,567)	(50,567)	27,631	01/15/2030	1.F FE	
0709999999. Subtotal - Bonds - U.S. Political Subdivisions of States, Territories and Possessions						1,252,621	1,135,000	1,402,915	1,312,439		(9,321)		(9,321)		1,303,119		(50,497)	(50,497)	58,149	XXX	XXX	
..3137FN-5Y-2	Freddie Mac Series 4904 Class CA 3.000% 08/15/57		01/01/2023	Paydown		50,255	50,255	51,237	51,210		(955)		(955)		50,255				126	08/15/2057	1.A	
..3137FN-5Y-2	Freddie Mac Series 4904 Class CA 3.000% 08/15/57		02/01/2023	Paydown		4,066	4,066	4,146	4,143		(77)		(77)		4,066				20	08/15/2057	1.A	
..3137FN-5Y-2	Freddie Mac Series 4904 Class CA 3.000% 08/15/57		03/01/2023	Paydown		3,189	3,189	3,251	3,249		(61)		(61)		3,189				24	08/15/2057	1.A	
..492279-CU-6	Kern Cnty CA Pension Oblig Adj Ref Taxable 4.185% 08/15/27		03/23/2023	Mortgage Guaranty Insurance Corporation		2,108,945	2,100,000	2,398,137	2,310,717		(10,546)		(10,546)		2,300,171		(191,226)	(191,226)	23,924	08/15/2027	1.D FE	
0909999999. Subtotal - Bonds - U.S. Special Revenues						2,166,455	2,157,510	2,456,771	2,369,319		(11,639)		(11,639)		2,357,681		(191,226)	(191,226)	24,094	XXX	XXX	
..053332-AN-2	Autozone Inc 2.875% 01/15/23		01/15/2023	Maturity		1,300,000	1,300,000	1,315,652	1,300,000						1,300,000				18,688	01/15/2023	2.B FE	
..254687-CZ-7	Walt Disney Company/The 3.700% 09/15/24		03/23/2023	Mortgage Guaranty Insurance Corporation		1,483,197	1,500,000	1,556,048	1,518,690		(2,812)		(2,812)		1,515,877		(32,680)	(32,680)	28,983	09/15/2024	2.A FE	
..316773-DF-4	Fifth Third Bancorp 4.337% 04/25/33		03/27/2023	Goldman Sachs & Co.		2,391,300	2,775,000	2,783,592	2,783,110		(170)		(170)		2,782,940		(391,639)	(391,639)	51,484	04/25/2033	2.A FE	
..68389X-BR-5	Oracle Corp 2.625% 02/15/23		02/15/2023	Maturity		1,575,000	1,575,000	1,566,771	1,574,725		275		275		1,575,000				20,672	02/15/2023	2.B FE	
..855244-AN-9	Starbucks Corp 3.100% 03/01/23		03/01/2023	Maturity		2,750,000	2,750,000	2,775,603	2,750,604		(604)		(604)		2,750,000				42,625	03/01/2023	2.A FE	
..91324P-BZ-4	Unitedhealth Group Inc 2.750% 02/15/23		02/15/2023	Maturity		1,700,000	1,700,000	1,699,132	1,699,938		62		62		1,700,000				23,375	02/15/2023	1.F FE	
..92343V-CR-3	Verizon Communications 3.500% 11/01/24		03/23/2023	Mortgage Guaranty Insurance Corporation		1,724,099	1,750,000	1,796,305	1,764,703		(2,031)		(2,031)		1,762,673		(38,574)	(38,574)	24,160	11/01/2024	2.A FE	
1109999999. Subtotal - Bonds - Industrial and Miscellaneous (Unaffiliated)						12,923,596	13,350,000	13,492,103	13,391,770		(5,280)		(5,280)		13,386,490		(462,893)	(462,893)	209,987	XXX	XXX	
2509999997. Total - Bonds - Part 4						16,381,038	16,680,876	17,391,647	17,113,157		(27,503)		(27,503)		17,085,656		(704,616)	(704,616)	292,436	XXX	XXX	
2509999998. Total - Bonds - Part 5						XXX	XXX	XXX	XXX	XXX	XXX	XXX	XXX	XXX	XXX	XXX	XXX	XXX	XXX	XXX	XXX	XXX
2509999999. Total - Bonds						16,381,038	16,680,876	17,391,647	17,113,157		(27,503)		(27,503)		17,085,656		(704,616)	(704,616)	292,436	XXX	XXX	
4509999997. Total - Preferred Stocks - Part 4							XXX													XXX	XXX	
4509999998. Total - Preferred Stocks - Part 5						XXX	XXX	XXX	XXX	XXX	XXX	XXX	XXX	XXX	XXX	XXX	XXX	XXX	XXX	XXX	XXX	XXX
4509999999. Total - Preferred Stocks							XXX													XXX	XXX	
5989999997. Total - Common Stocks - Part 4							XXX													XXX	XXX	
5989999998. Total - Common Stocks - Part 5						XXX	XXX	XXX	XXX	XXX	XXX	XXX	XXX	XXX	XXX	XXX	XXX	XXX	XXX	XXX	XXX	XXX
5989999999. Total - Common Stocks							XXX													XXX	XXX	
5999999999. Total - Preferred and Common Stocks							XXX													XXX	XXX	
6009999999 - Totals						16,381,038	XXX	17,391,647	17,113,157		(27,503)		(27,503)		17,085,656		(704,616)	(704,616)	292,436	XXX	XXX	

Schedule DB - Part A - Section 1 - Options, Caps, Floors, Collars, Swaps and Forwards Open

N O N E

Schedule DB - Part B - Section 1 - Futures Contracts Open

N O N E

Schedule DB - Part B - Section 1B - Brokers with whom cash deposits have been made

N O N E

Schedule DB - Part D - Section 1 - Counterparty Exposure for Derivative Instruments Open

N O N E

Schedule DB - Part D-Section 2 - Collateral for Derivative Instruments Open - Pledged By

N O N E

Schedule DB - Part D-Section 2 - Collateral for Derivative Instruments Open - Pledged To

N O N E

Schedule DB - Part E - Derivatives Hedging Variable Annuity Guarantees

N O N E

Schedule DL - Part 1 - Reinvested Collateral Assets Owned

N O N E

Schedule DL - Part 2 - Reinvested Collateral Assets Owned

N O N E

STATEMENT AS OF MARCH 31, 2023 OF THE MGIC INDEMNITY CORPORATION

SCHEDULE E - PART 2 - CASH EQUIVALENTS

Show Investments Owned End of Current Quarter

1	2	3	4	5	6	7	8	9
CUSIP	Description	Code	Date Acquired	Rate of Interest	Maturity Date	Book/Adjusted Carrying Value	Amount of Interest Due and Accrued	Amount Received During Year
0109999999	Total - U.S. Government Bonds							
0309999999	Total - All Other Government Bonds							
0509999999	Total - U.S. States, Territories and Possessions Bonds							
0709999999	Total - U.S. Political Subdivisions Bonds							
0909999999	Total - U.S. Special Revenues Bonds							
1109999999	Total - Industrial and Miscellaneous (Unaffiliated) Bonds							
1309999999	Total - Hybrid Securities							
1509999999	Total - Parent, Subsidiaries and Affiliates Bonds							
1909999999	Subtotal - Unaffiliated Bank Loans							
2419999999	Total - Issuer Obligations							
2429999999	Total - Residential Mortgage-Backed Securities							
2439999999	Total - Commercial Mortgage-Backed Securities							
2449999999	Total - Other Loan-Backed and Structured Securities							
2459999999	Total - SVO Identified Funds							
2469999999	Total - Affiliated Bank Loans							
2479999999	Total - Unaffiliated Bank Loans							
2509999999	Total Bonds							
38141W-23-2	Goldman Sachs Financial Square Financial Square MMkt Fund		03/31/2023	4.799		4,937,743		54,438
38141W-27-3	Goldman Sachs Financial Square FS Govt Inst Fund		03/31/2023	4.725		314,716		3,384
665278-40-4	Northern Trust US Government Portfolio		03/29/2023	4.596		3,146,696	21,124	8,223
8309999999	Subtotal - All Other Money Market Mutual Funds					8,399,155	21,124	66,045
8609999999	Total Cash Equivalents					8,399,155	21,124	66,045