



PROPERTY AND CASUALTY COMPANIES - ASSOCIATION EDITION

QUARTERLY STATEMENT

AS OF JUNE 30, 2021

OF THE CONDITION AND AFFAIRS OF THE

MGIC INDEMNITY CORPORATION

NAIC Group Code 0105 (Current) 0105 (Prior) NAIC Company Code 18740 Employer's ID Number 39-0916088

Organized under the Laws of Wisconsin, State of Domicile or Port of Entry WI

Country of Domicile United States of America

Incorporated/Organized 11/15/1956 Commenced Business 02/15/1957

Statutory Home Office 250 East Kilbourn Avenue Milwaukee, WI, US 53202 (Street and Number) (City or Town, State, Country and Zip Code)

Main Administrative Office 250 East Kilbourn Avenue Milwaukee, WI, US 53202 (Street and Number) (City or Town, State, Country and Zip Code) 800-558-9900 (Area Code) (Telephone Number)

Mail Address P.O. Box 756 Milwaukee, WI, US 53201 (Street and Number or P.O. Box) (City or Town, State, Country and Zip Code)

Primary Location of Books and Records 250 East Kilbourn Avenue Milwaukee, WI, US 53202 (Street and Number) (City or Town, State, Country and Zip Code) 800-558-9900 (Area Code) (Telephone Number)

Internet Website Address www.MGIC.com

Statutory Statement Contact Heidi Ann Heyrman 800-558-9900-2646 (Name) (Area Code) (Telephone Number) govreg_alerts@mgic.com 414-347-6959 (E-mail Address) (FAX Number)

OFFICERS

President & Chief Operating Officer Salvatore Antonino Miosi Vice President & Controller Julie Kay Sperber Executive Vice President & Secretary Paula Christine Maggio

OTHER

Nathan Howe Colson, Executive Vice President James Jeffrey Hughes, Executive Vice President Timothy James Mattke, Chief Executive Officer Steven Mark Thompson, Executive Vice President

DIRECTORS OR TRUSTEES

Nathan Ryan Abramowski Nathan Howe Colson Heidi Ann Heyrman Paula Christine Maggio Timothy James Mattke Salvatore Antonino Miosi Julie Kay Sperber Steven Mark Thompson

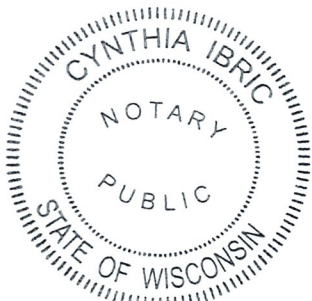
State of Wisconsin SS: County of Milwaukee

The officers of this reporting entity being duly sworn, each depose and say that they are the described officers of said reporting entity, and that on the reporting period stated above, all of the herein described assets were the absolute property of the said reporting entity, free and clear from any liens or claims thereon, except as herein stated, and that this statement, together with related exhibits, schedules and explanations therein contained, annexed or referred to, is a full and true statement of all the assets and liabilities and of the condition and affairs of the said reporting entity as of the reporting period stated above, and of its income and deductions therefrom for the period ended, and have been completed in accordance with the NAIC Annual Statement Instructions and Accounting Practices and Procedures manual except to the extent that: (1) state law may differ; or, (2) that state rules or regulations require differences in reporting not related to accounting practices and procedures, according to the best of their information, knowledge and belief, respectively. Furthermore, the scope of this attestation by the described officers also includes the related corresponding electronic filing with the NAIC, when required, that is an exact copy (except for formatting differences due to electronic filing) of the enclosed statement. The electronic filing may be requested by various regulators in lieu of or in addition to the enclosed statement.

Signatures of Salvatore Antonino Miosi, Paula Christine Maggio, and Julie Kay Sperber with titles: President & Chief Operating Officer, Executive Vice President & Secretary, Vice President & Controller

Subscribed and sworn to before me this 5th day of August, 2021 Cynthia Ibric Notary Public My commission expires November 15, 2023

- a. Is this an original filing? Yes [X] No [] b. If no, 1. State the amendment number..... 2. Date filed 3. Number of pages attached.....



STATEMENT AS OF JUNE 30, 2021 OF THE MGIC INDEMNITY CORPORATION

ASSETS

	Current Statement Date			4 December 31 Prior Year Net Admitted Assets
	1 Assets	2 Nonadmitted Assets	3 Net Admitted Assets (Cols. 1 - 2)	
1. Bonds	150,812,039		150,812,039	149,068,251
2. Stocks:				
2.1 Preferred stocks				
2.2 Common stocks				
3. Mortgage loans on real estate:				
3.1 First liens				
3.2 Other than first liens				
4. Real estate:				
4.1 Properties occupied by the company (less \$ encumbrances)				
4.2 Properties held for the production of income (less \$ encumbrances)				
4.3 Properties held for sale (less \$ encumbrances)				
5. Cash (\$4,621,168), cash equivalents (\$13,391,886) and short-term investments (\$)	18,013,054		18,013,054	11,843,858
6. Contract loans (including \$ premium notes)				
7. Derivatives				
8. Other invested assets				
9. Receivables for securities				
10. Securities lending reinvested collateral assets				
11. Aggregate write-ins for invested assets				
12. Subtotals, cash and invested assets (Lines 1 to 11)	168,825,093		168,825,093	160,912,109
13. Title plants less \$ charged off (for Title insurers only)				
14. Investment income due and accrued	1,331,746		1,331,746	1,293,613
15. Premiums and considerations:				
15.1 Uncollected premiums and agents' balances in the course of collection	58,185		58,185	111,043
15.2 Deferred premiums, agents' balances and installments booked but deferred and not yet due (including \$ earned but unbilled premiums)				
15.3 Accrued retrospective premiums (\$) and contracts subject to redetermination (\$)				
16. Reinsurance:				
16.1 Amounts recoverable from reinsurers	24,861		24,861	34,331
16.2 Funds held by or deposited with reinsured companies				
16.3 Other amounts receivable under reinsurance contracts				
17. Amounts receivable relating to uninsured plans				
18.1 Current federal and foreign income tax recoverable and interest thereon	50,394		50,394	77,536
18.2 Net deferred tax asset	2,659,247	1,858,236	801,011	703,291
19. Guaranty funds receivable or on deposit				
20. Electronic data processing equipment and software				
21. Furniture and equipment, including health care delivery assets (\$)				
22. Net adjustment in assets and liabilities due to foreign exchange rates				
23. Receivables from parent, subsidiaries and affiliates				14,991
24. Health care (\$) and other amounts receivable				
25. Aggregate write-ins for other than invested assets				6,170
26. Total assets excluding Separate Accounts, Segregated Accounts and Protected Cell Accounts (Lines 12 to 25)	172,949,526	1,858,236	171,091,290	163,153,084
27. From Separate Accounts, Segregated Accounts and Protected Cell Accounts				
28. Total (Lines 26 and 27)	172,949,526	1,858,236	171,091,290	163,153,084
DETAILS OF WRITE-INS				
1101.				
1102.				
1103.				
1198. Summary of remaining write-ins for Line 11 from overflow page				
1199. Totals (Lines 1101 through 1103 plus 1198)(Line 11 above)				
2501. Miscellaneous receivables				6,170
2502.				
2503.				
2598. Summary of remaining write-ins for Line 25 from overflow page				
2599. Totals (Lines 2501 through 2503 plus 2598)(Line 25 above)				6,170

NOTE: We elected to use rounding in reporting amounts in this statement.

STATEMENT AS OF JUNE 30, 2021 OF THE MGIC INDEMNITY CORPORATION
LIABILITIES, SURPLUS AND OTHER FUNDS

	1 Current Statement Date	2 December 31, Prior Year
1. Losses (current accident year \$174,113)	347,174	202,750
2. Reinsurance payable on paid losses and loss adjustment expenses		
3. Loss adjustment expenses	9,715	5,575
4. Commissions payable, contingent commissions and other similar charges		
5. Other expenses (excluding taxes, licenses and fees)	18,501	17,897
6. Taxes, licenses and fees (excluding federal and foreign income taxes)	37,203	41,972
7.1 Current federal and foreign income taxes (including \$ on realized capital gains (losses))		
7.2 Net deferred tax liability		
8. Borrowed money \$ and interest thereon \$		
9. Unearned premiums (after deducting unearned premiums for ceded reinsurance of \$10,973 and including warranty reserves of \$ and accrued accident and health experience rating refunds including \$ for medical loss ratio rebate per the Public Health Service Act)	5,348,345	3,123,194
10. Advance premium		
11. Dividends declared and unpaid:		
11.1 Stockholders		
11.2 Policyholders		
12. Ceded reinsurance premiums payable (net of ceding commissions)	155,885	338,245
13. Funds held by company under reinsurance treaties		
14. Amounts withheld or retained by company for account of others		
15. Remittances and items not allocated		
16. Provision for reinsurance (including \$ certified)		
17. Net adjustments in assets and liabilities due to foreign exchange rates		
18. Drafts outstanding		
19. Payable to parent, subsidiaries and affiliates	52,703	
20. Derivatives		
21. Payable for securities	5,166,983	1,230,000
22. Payable for securities lending		
23. Liability for amounts held under uninsured plans		
24. Capital notes \$ and interest thereon \$		
25. Aggregate write-ins for liabilities	55,579,291	54,996,312
26. Total liabilities excluding protected cell liabilities (Lines 1 through 25)	66,715,800	59,955,945
27. Protected cell liabilities		
28. Total liabilities (Lines 26 and 27)	66,715,800	59,955,945
29. Aggregate write-ins for special surplus funds		
30. Common capital stock	3,588,000	3,588,000
31. Preferred capital stock		
32. Aggregate write-ins for other than special surplus funds		
33. Surplus notes		
34. Gross paid in and contributed surplus	98,225,792	98,225,792
35. Unassigned funds (surplus)	2,561,698	1,383,347
36. Less treasury stock, at cost:		
36.1 shares common (value included in Line 30 \$)		
36.2 shares preferred (value included in Line 31 \$)		
37. Surplus as regards policyholders (Lines 29 to 35, less 36)	104,375,490	103,197,139
38. Totals (Page 2, Line 28, Col. 3)	171,091,290	163,153,084
DETAILS OF WRITE-INS		
2501. Contingency reserve per Wisconsin Administrative Code Section Insurance 3.09(14)	55,579,291	54,996,312
2502.		
2503.		
2598. Summary of remaining write-ins for Line 25 from overflow page		
2599. Totals (Lines 2501 through 2503 plus 2598)(Line 25 above)	55,579,291	54,996,312
2901.		
2902.		
2903.		
2998. Summary of remaining write-ins for Line 29 from overflow page		
2999. Totals (Lines 2901 through 2903 plus 2998)(Line 29 above)		
3201.		
3202.		
3203.		
3298. Summary of remaining write-ins for Line 32 from overflow page		
3299. Totals (Lines 3201 through 3203 plus 3298)(Line 32 above)		

STATEMENT AS OF JUNE 30, 2021 OF THE MGIC INDEMNITY CORPORATION

STATEMENT OF INCOME

	1 Current Year to Date	2 Prior Year to Date	3 Prior Year Ended December 31
UNDERWRITING INCOME			
1. Premiums earned:			
1.1 Direct (written \$ 3,869,817)	1,751,449	1,953,882	3,963,850
1.2 Assumed (written \$)			
1.3 Ceded (written \$ 492,244)	599,027	1,611,375	2,728,626
1.4 Net (written \$ 3,377,573)	1,152,422	342,507	1,235,224
DEDUCTIONS:			
2. Losses incurred (current accident year \$ 174,113):			
2.1 Direct	45,942	746,266	996,896
2.2 Assumed			
2.3 Ceded	(107,490)	667,139	793,941
2.4 Net	153,432	79,127	202,955
3. Loss adjustment expenses incurred	4,141	2,187	6,084
4. Other underwriting expenses incurred	816,001	151,775	759,782
5. Aggregate write-ins for underwriting deductions	582,979	265,509	749,108
6. Total underwriting deductions (Lines 2 through 5)	1,556,553	498,598	1,717,929
7. Net income of protected cells			
8. Net underwriting gain or (loss) (Line 1 minus Line 6 + Line 7)	(404,131)	(156,091)	(482,705)
INVESTMENT INCOME			
9. Net investment income earned	1,901,094	2,162,606	4,137,040
10. Net realized capital gains (losses) less capital gains tax of \$ 174	656	27,093	1,730
11. Net investment gain (loss) (Lines 9 + 10)	1,901,750	2,189,699	4,138,770
OTHER INCOME			
12. Net gain or (loss) from agents' or premium balances charged off (amount recovered \$ amount charged off \$ (1,018))	1,018	578	1,537
13. Finance and service charges not included in premiums			
14. Aggregate write-ins for miscellaneous income			
15. Total other income (Lines 12 through 14)	1,018	578	1,537
16. Net income before dividends to policyholders, after capital gains tax and before all other federal and foreign income taxes (Lines 8 + 11 + 15)	1,498,637	2,034,186	3,657,602
17. Dividends to policyholders			
18. Net income, after dividends to policyholders, after capital gains tax and before all other federal and foreign income taxes (Line 16 minus Line 17)	1,498,637	2,034,186	3,657,602
19. Federal and foreign income taxes incurred	417,968	442,554	792,099
20. Net income (Line 18 minus Line 19)(to Line 22)	1,080,669	1,591,632	2,865,503
CAPITAL AND SURPLUS ACCOUNT			
21. Surplus as regards policyholders, December 31 prior year	103,197,139	99,746,602	99,746,602
22. Net income (from Line 20)	1,080,669	1,591,632	2,865,503
23. Net transfers (to) from Protected Cell accounts			
24. Change in net unrealized capital gains (losses) less capital gains tax of \$ (8)	(30)	12	12
25. Change in net unrealized foreign exchange capital gain (loss)			
26. Change in net deferred income tax	112,834	30,432	40,957
27. Change in nonadmitted assets	(15,122)	(18,541)	544,065
28. Change in provision for reinsurance			
29. Change in surplus notes			
30. Surplus (contributed to) withdrawn from protected cells			
31. Cumulative effect of changes in accounting principles			
32. Capital changes:			
32.1 Paid in			
32.2 Transferred from surplus (Stock Dividend)			
32.3 Transferred to surplus			
33. Surplus adjustments:			
33.1 Paid in			
33.2 Transferred to capital (Stock Dividend)			
33.3 Transferred from capital			
34. Net remittances from or (to) Home Office			
35. Dividends to stockholders			
36. Change in treasury stock			
37. Aggregate write-ins for gains and losses in surplus			
38. Change in surplus as regards policyholders (Lines 22 through 37)	1,178,351	1,603,535	3,450,537
39. Surplus as regards policyholders, as of statement date (Lines 21 plus 38)	104,375,490	101,350,137	103,197,139
DETAILS OF WRITE-INS			
0501. Contingency reserve contribution per Wisconsin Administrative Code Section Insurance 3.09(14)	583,845	266,702	751,253
0502. 120 month release of statutory contingency reserve	(866)	(1,193)	(2,145)
0503. Summary of remaining write-ins for Line 5 from overflow page			
0598. Summary of remaining write-ins for Line 5 from overflow page			
0599. Totals (Lines 0501 through 0503 plus 0598)(Line 5 above)	582,979	265,509	749,108
1401. Summary of remaining write-ins for Line 14 from overflow page			
1402. Summary of remaining write-ins for Line 14 from overflow page			
1403. Summary of remaining write-ins for Line 14 from overflow page			
1498. Summary of remaining write-ins for Line 14 from overflow page			
1499. Totals (Lines 1401 through 1403 plus 1498)(Line 14 above)			
3701. Summary of remaining write-ins for Line 37 from overflow page			
3702. Summary of remaining write-ins for Line 37 from overflow page			
3703. Summary of remaining write-ins for Line 37 from overflow page			
3798. Summary of remaining write-ins for Line 37 from overflow page			
3799. Totals (Lines 3701 through 3703 plus 3798)(Line 37 above)			

STATEMENT AS OF JUNE 30, 2021 OF THE MGIC INDEMNITY CORPORATION

CASH FLOW

	1 Current Year To Date	2 Prior Year To Date	3 Prior Year Ended December 31
Cash from Operations			
1. Premiums collected net of reinsurance	3,248,071	229,347	2,507,740
2. Net investment income	2,124,811	2,458,548	4,540,599
3. Miscellaneous income	1,018	578	1,537
4. Total (Lines 1 to 3)	5,373,900	2,688,473	7,049,876
5. Benefit and loss related payments	(413)	(61,926)	(213,866)
6. Net transfers to Separate Accounts, Segregated Accounts and Protected Cell Accounts			
7. Commissions, expenses paid and aggregate write-ins for deductions	813,948	353,024	766,704
8. Dividends paid to policyholders			
9. Federal and foreign income taxes paid (recovered) net of \$ 27,923 tax on capital gains (losses)	391,000	385,000	773,376
10. Total (Lines 5 through 9)	1,204,535	676,098	1,326,214
11. Net cash from operations (Line 4 minus Line 10)	4,169,365	2,012,375	5,723,662
Cash from Investments			
12. Proceeds from investments sold, matured or repaid:			
12.1 Bonds	17,599,722	37,919,720	63,929,652
12.2 Stocks			
12.3 Mortgage loans			
12.4 Real estate			
12.5 Other invested assets			
12.6 Net gains or (losses) on cash, cash equivalents and short-term investments	(50)	(492)	(572)
12.7 Miscellaneous proceeds			
12.8 Total investment proceeds (Lines 12.1 to 12.7)	17,599,672	37,919,228	63,929,080
13. Cost of investments acquired (long-term only):			
13.1 Bonds	19,604,517	37,036,609	60,271,807
13.2 Stocks			
13.3 Mortgage loans			
13.4 Real estate			
13.5 Other invested assets			
13.6 Miscellaneous applications	(3,936,983)		(1,230,000)
13.7 Total investments acquired (Lines 13.1 to 13.6)	15,667,534	37,036,609	59,041,807
14. Net increase (or decrease) in contract loans and premium notes			
15. Net cash from investments (Line 12.8 minus Line 13.7 and Line 14)	1,932,138	882,619	4,887,273
Cash from Financing and Miscellaneous Sources			
16. Cash provided (applied):			
16.1 Surplus notes, capital notes			
16.2 Capital and paid in surplus, less treasury stock			
16.3 Borrowed funds			
16.4 Net deposits on deposit-type contracts and other insurance liabilities			
16.5 Dividends to stockholders			
16.6 Other cash provided (applied)	67,694	249,880	332,476
17. Net cash from financing and miscellaneous sources (Line 16.1 through Line 16.4 minus Line 16.5 plus Line 16.6)	67,694	249,880	332,476
RECONCILIATION OF CASH, CASH EQUIVALENTS AND SHORT-TERM INVESTMENTS			
18. Net change in cash, cash equivalents and short-term investments (Line 11, plus Lines 15 and 17)	6,169,197	3,144,874	10,943,411
19. Cash, cash equivalents and short-term investments:			
19.1 Beginning of year	11,843,857	900,446	900,446
19.2 End of period (Line 18 plus Line 19.1)	18,013,054	4,045,320	11,843,857

Note: Supplemental disclosures of cash flow information for non-cash transactions:

--	--	--	--

NOTES TO FINANCIAL STATEMENTS

1. Summary of Significant Accounting Policies and Going Concern

A. Accounting Practices

The financial statements of MGIC Indemnity Corporation (“MIC”) are presented on the basis of accounting practices prescribed or permitted by the Office of the Commissioner of Insurance of the State of Wisconsin (“OCI”). The OCI recognizes only statutory accounting practices prescribed or permitted by the State of Wisconsin for determining and reporting the financial condition and results of operations of an insurance company, for determining its solvency under the Wisconsin insurance law. The National Association of Insurance Commissioners’ (“NAIC”) *Accounting Practices and Procedures Manual* (“NAIC SAP”) has been adopted as a component of prescribed practices by the OCI. The OCI has adopted certain prescribed accounting practices that differ from those found in NAIC SAP. Specifically, Wisconsin domiciled companies record changes in the contingency reserve through the income statement as an underwriting deduction. In NAIC SAP, changes in the contingency reserve are recorded directly to unassigned surplus. In addition, Wisconsin domiciled companies’ annual contribution to the contingency reserve is calculated as the greater of a) fifty percent of net earned premium or b) one-seventh of the result of the minimum policyholders’ position calculation provided under Wisconsin Administrative Code Section Insurance 3.09(14). In NAIC SAP, the annual contribution to the contingency reserve is fifty percent of net earned premium. The OCI has the right to permit other specific practices that deviate from prescribed practices. A reconciliation of our net income and capital and surplus between the NAIC SAP and practices permitted by the OCI is shown below:

	SSAP #	F/S Page	F/S Line #	2021	2020
NET INCOME					
(1) MGIC state basis (Page 4, Line 20, Columns 1 & 3)	XXX	XXX	XXX	\$ 1,080,669	\$ 2,865,503
(2) State Prescribed Practices that are an increase/(decrease) from NAIC SAP					
Change in contingency reserve	00	4	5	(582,979)	(749,108)
(3) State Permitted Practices that are an increase/(decrease) from NAIC SAP				-	-
(4) NAIC SAP (1-2-3=4)	XXX	XXX	XXX	\$ 1,663,648	\$ 3,614,611
SURPLUS					
(5) MGIC state basis (Page 3, Line 37, Columns 1 & 2)	XXX	XXX	XXX	\$ 104,375,490	\$ 103,197,139
(6) State Prescribed Practices that are an increase/(decrease) from NAIC SAP					
Accumulated difference in contingency reserve	00	3	37	(1,643,198)	(1,644,023)
(7) State Permitted Practices that are an increase/(decrease) from NAIC SAP				-	-
(8) NAIC SAP (5-6-7=8)	XXX	XXX	XXX	\$ 106,018,688	\$ 104,841,162

B. Use of Estimates in the Preparation of the Financial Statements – no significant changes

C. Accounting Policy

- (1) No significant changes
- (2) Generally, bonds are stated at amortized cost and are amortized using the modified scientific method in accordance with SSAP No. 26R, Bonds (“SSAP No. 26R”). We do not own any mandatory convertible securities or SVO-identified investments identified in SSAP No. 26R.
- (3) - (5) No significant changes
- (6) Loan-backed securities are valued using the retrospective or prospective method and stated at amortized cost or fair value in accordance with their NAIC designation.
- (7) - (10) No significant changes
- (11) Case reserves and loss adjustment expenses (“LAE”) reserves are established when notices of delinquency on insured mortgage loans are received. Such loans are referred to as being in our delinquency inventory. For reporting purposes, we consider a loan delinquent when it is two or more payments past due and has not become current or resulted in a claim payment. Consistent with industry standards for mortgage insurers, we do not establish case reserves for future claims on insured loans which are not currently delinquent. Case reserves are established by estimating the number of loans in our inventory of delinquent loans that will result in a claim payment, which is referred to as the claim rate, and further estimating the amount of the claim payment, which is referred to as claim severity. Our case reserve estimates are established based upon historical experience, including rescissions of policies, curtailments of claims, and loan modification activity. Adjustments to reserve estimates are reflected in the financial statements in the years in which the adjustments are made.

Incurred but not reported (“IBNR”) reserves are established for delinquencies estimated to have occurred prior to the close of an accounting period, but not yet reported to us. Consistent with reserves for reported delinquencies, IBNR reserves are also established using estimated claim rates and claim severities.

LAE reserves are established for the estimated costs of settling claims, including legal and other expenses and general expenses of administering the claims settlement process.

Loss reserves are ceded to reinsurers under our reinsurance agreements.

Estimation of losses is inherently judgmental. The conditions that affect the claim rate and claim severity include the current and future state of the domestic economy, including unemployment and the current and future strength of local housing markets; exposure on insured loans; the amount of time between delinquency and claim filing; and curtailments and rescissions. The actual amount of the claim payments may be substantially different than our loss reserve estimates. Our estimates could be adversely affected by several factors, including a deterioration of regional or national economic conditions, including unemployment and the continued impact of the COVID-19 pandemic, leading to a reduction in borrowers’ income and thus their ability to make mortgage payments, the impact of past and future government initiatives and actions taken by Fannie Mae and Freddie Mac (including mortgage forbearance programs and foreclosure moratoriums), and a drop in housing values which may affect borrower willingness to continue to make mortgage payments when the value of the home is below the mortgage balance. Loss reserves in future periods will also be dependent on the number of loans reported to us as delinquent.

Changes to our estimates could result in a material impact to our results of operations and financial position, even in a stable economic environment. It is reasonably possible that given the uncertainty of the impacts of the COVID-19 pandemic, our reserve estimate may continue to be impacted.

(12) – (13) No significant changes

D. Going Concern

Based upon its evaluation of relevant conditions and events, management does not have substantial doubt about our ability to continue as a going concern.

2. Accounting Changes and Corrections of Errors – not applicable
3. Business Combinations and Goodwill – not applicable
4. Discontinued Operations – not applicable
5. Investments
 - A. Mortgage Loans, including Mezzanine Real Estate Loans – not applicable
 - B. Debt Restructuring – not applicable
 - C. Reverse Mortgages – not applicable

STATEMENT AS OF JUNE 30, 2021 OF THE MGIC INDEMNITY CORPORATION

D. Loan-Backed Securities

- (1) Prepayment assumptions for mortgage-backed/loan-backed and structured securities were obtained from investment banker surveys or internal estimates.
- (2) We did not recognize any other-than-temporary impairments (“OTTI”) in the current reporting period.
- (3) We do not currently hold any securities for which an OTTI has been recognized.
- (4) All impaired securities for which an OTTI has not been recognized in earnings as a realized loss:

a. The aggregate amount of unrealized losses:	1. Less than 12 months	\$ 3,142
	2. 12 months or longer	\$ -
b. The aggregate related fair value of securities with unrealized losses:	1. Less than 12 months	\$ 2,790,628
	2. 12 months or longer	\$ -

- (5) All loan-backed and structured securities in an unrealized loss position were reviewed for potential OTTIs; however, we have the intent and ability to hold these securities long enough to recover our cost basis. Cash flow analysis and credit research were used to support the conclusion that impairments are not other-than-temporary. The unrealized losses were primarily caused by changes in interest rates between the time of purchase and the fair value measurement date.

- E. Dollar Repurchase Agreements and/or Securities Lending Transactions – not applicable
 - F. Repurchase Agreements Transactions Accounted for as Secured Borrowing – not applicable
 - G. Reverse Repurchase Agreements Transactions Accounted for as Secured Borrowing – not applicable
 - H. Repurchase Agreements Transactions Accounted for as a Sale – not applicable
 - I. Reverse Repurchase Agreements Transactions Accounted for as a Sale – not applicable
 - J. Real Estate – no significant changes
 - K. Low-Income Housing Tax Credits (“LIHTC”) – not applicable
 - L. Restricted Assets – no significant changes
 - M. Working Capital Finance Investments – not applicable
 - N. Offsetting and Netting of Assets and Liabilities – not applicable
 - O. SGI Securities – not applicable
 - P. Short Sales – not applicable
 - Q. Prepayment Penalty and Acceleration Fees – no significant changes
 - R. Reporting Entity’s Share of Cash Pool by Asset Type – not applicable
6. Joint Ventures, Partnerships and Limited Liability Companies – not applicable
 7. Investment Income – not applicable
 8. Derivative Instruments – not applicable
 9. Income Taxes – no significant changes
 10. Information Concerning Parent, Subsidiaries, Affiliates and Other Related Parties – no significant changes
 11. Debt – not applicable
 12. Retirement Plans, Deferred Compensation, Postemployment Benefits and Compensated Absences and Other Postretirement Benefit Plans – not applicable
 13. Capital and Surplus, Dividend Restrictions and Quasi-Reorganizations – no significant changes
 14. Liabilities, Contingencies and Assessments – not applicable
 15. Leases – not applicable
 16. Information About Financial Instruments with Off-Balance Sheet Risk and Financial Instruments with Concentrations of Credit Risk – not applicable
 17. Sale, Transfer and Servicing of Financial Assets and Extinguishments of Liabilities – not applicable
 18. Gain or Loss to the Reporting Entity from Uninsured Plans and the Uninsured Portion of Partially Insured Plans – not applicable
 19. Direct Premium Written/Produced by Managing General Agents/Third Party Administrators – not applicable
 20. Fair Value Measurement
 - A. Assets and Liabilities Measured and Reported at Fair Value
 - (1) Fair Value Measurements at Reporting Date

We applied the following fair value hierarchy in order to measure fair value for assets and liabilities:

Level 1 – Quoted prices for identical instruments in active markets that we can access.

Level 2 – Quoted prices for similar instruments in active markets that we can access; quoted prices for identical or similar instruments in markets that are not active; and inputs, other than quoted prices, that are observable in the marketplace for the instrument. The observable inputs are used in valuation models to calculate the fair value of the instruments.

Level 3 – Valuations derived from valuation techniques in which one or more significant inputs or value drivers are unobservable. The inputs used to derive the fair value of Level 3 securities reflect our own assumptions about the assumptions a market participant would use in pricing an asset or liability.

Fair value measurements at reporting date:

	(Level 1)	(Level 2)	(Level 3)	Net Asset Value (NAV)	Total
a. Assets at fair value					
Cash equivalents - Money market mutual funds	\$ 13,391,886	\$ -	\$ -	\$ -	\$ 13,391,886
Total assets at fair value	\$ 13,391,886	\$ -	\$ -	\$ -	\$ 13,391,886
b. Liabilities at fair value					
Total liabilities at fair value	\$ -	\$ -	\$ -	\$ -	\$ -

- (2) Fair Value Measurements in (Level 3) of the Fair Value hierarchy – not applicable

- (3) Policy on Transfers Into and Out of Level 3

At the end of each reporting period, we evaluate whether or not any event has occurred, or circumstances have changed that would cause a security to be transferred into or out of Level 3. During the period ended June 30, 2021, there were no transfers into or out of Level 3.

- (4) Inputs and Techniques Used for Level 2 Fair Values

We use independent pricing sources to determine the fair value of our financial instruments, which primarily consist of assets in our bond portfolio, but also includes amounts in cash and cash equivalents and restricted cash. A variety of inputs are used; in approximate order of priority, they are: benchmark yields, reported trades, broker/dealer quotes, issuer spreads, two-sided markets, benchmark securities, bids, offers, and reference data including market research publications. Market indicators, industry and economic events are also considered. This information is evaluated using a multidimensional pricing model. This model combines all inputs to arrive at a value assigned to each security. Quality controls are performed by the independent pricing sources throughout this process, which include reviewing tolerance reports, trading information, data changes, and directional moves compared to market moves.

On a quarterly basis, we perform quality controls over values received from the pricing sources which also include reviewing tolerance reports, data changes, and directional moves compared to market moves. We have not made any adjustments to the prices obtained from the independent pricing sources.

To determine the fair value of financial instruments in Level 1 and 2 of the fair value hierarchy, independent pricing sources, as described above, have been used. One price is provided per security based on observable market data. To ensure securities are appropriately classified in the fair value hierarchy, we review the pricing techniques and methodologies of the independent pricing sources and believe that their policies adequately consider market activity, either based on specific transactions for the issue valued or based on modeling of securities with similar credit quality, duration, yield and structure that were recently traded.

- B. Other Fair Value Disclosures – not applicable

STATEMENT AS OF JUNE 30, 2021 OF THE MGIC INDEMNITY CORPORATION

C. Aggregate Fair Value for All Financial Instruments

The following tables set forth the aggregate fair values, admitted asset values and level of fair value amounts for financial instruments held as of June 30, 2021 and December 31, 2020:

June 30, 2021	Aggregate Fair	Admitted Asset	Level 1	Level 2	Level 3	Net Asset Value (NAV)	Not Practicable (Carrying Value)
	Value	Value					
Bonds	\$ 155,485,888	\$ 150,812,039	\$ 9,396,911	\$ 146,088,977	\$ -	\$ -	\$ -
Cash equivalents	13,391,886	13,391,886	13,391,886	-	-	-	-

December 31, 2020	Aggregate Fair	Admitted Asset	Level 1	Level 2	Level 3	Net Asset Value (NAV)	Not Practicable (Carrying Value)
	Value	Value					
Bonds	\$ 155,710,210	\$ 149,068,251	\$ 9,440,088	\$ 146,270,122	\$ -	\$ -	\$ -
Cash equivalents	8,367,284	8,367,284	8,367,284	-	-	-	-

See Note 20A(4) for information on the determination of the fair value of Level 1 and Level 2 financial instruments.

D. Not Practicable to Estimate Fair Value - not applicable

21. Other Items – no significant changes

22. Events subsequent

We have considered subsequent events through August 5, 2021.

23. Reinsurance – no significant changes

24. Retrospectively Rated Contracts & Contracts Subject to Redetermination – not applicable

25. Change in Incurred Losses and Loss Adjustment Expenses

A. Reserves as of December 31, 2020 were \$208 thousand. As of June 30, 2021, \$9 thousand has been paid for incurred losses and loss adjustment expenses attributable to insured events of prior years. Reserves remaining for prior years are now \$178 thousand as a result of re-estimation of unpaid claims and claim adjustment expenses. Therefore, there has been a \$21 thousand favorable prior year development from December 31, 2020 to June 30, 2021. The decrease is generally the result of ongoing analysis of recent loss development trends. Original estimates are increased or decreased as additional information becomes known. We did not adjust premiums based on past claim activity.

B. Not applicable

26. Inter-company Pooling Arrangements – not applicable

27. Structured Settlements – not applicable

28. Health Care Receivables – not applicable

29. Participating Policies – not applicable

30. Premium Deficiency Reserves – no significant changes

31. High Deductibles - not applicable

32. Discounting of Liabilities for Unpaid Losses or Unpaid Loss Adjustment Expenses - not applicable

33. Asbestos/Environmental Reserves - not applicable

34. Subscriber Savings Accounts - not applicable

35. Multiple Peril Crop Insurance - not applicable

36. Financial Guaranty Insurance – not applicable

STATEMENT AS OF JUNE 30, 2021 OF THE MGIC INDEMNITY CORPORATION
GENERAL INTERROGATORIES

PART 1 - COMMON INTERROGATORIES

GENERAL

- 1.1 Did the reporting entity experience any material transactions requiring the filing of Disclosure of Material Transactions with the State of Domicile, as required by the Model Act? Yes [] No [X]
- 1.2 If yes, has the report been filed with the domiciliary state? Yes [] No []
- 2.1 Has any change been made during the year of this statement in the charter, by-laws, articles of incorporation, or deed of settlement of the reporting entity? Yes [] No [X]
- 2.2 If yes, date of change:
- 3.1 Is the reporting entity a member of an Insurance Holding Company System consisting of two or more affiliated persons, one or more of which is an insurer? Yes [X] No []
 If yes, complete Schedule Y, Parts 1 and 1A.
- 3.2 Have there been any substantial changes in the organizational chart since the prior quarter end? Yes [] No [X]
- 3.3 If the response to 3.2 is yes, provide a brief description of those changes.
- 3.4 Is the reporting entity publicly traded or a member of a publicly traded group? Yes [X] No []
- 3.5 If the response to 3.4 is yes, provide the CIK (Central Index Key) code issued by the SEC for the entity/group. 0000876437
- 4.1 Has the reporting entity been a party to a merger or consolidation during the period covered by this statement? Yes [] No [X]
 If yes, complete and file the merger history data file with the NAIC.
- 4.2 If yes, provide the name of the entity, NAIC Company Code, and state of domicile (use two letter state abbreviation) for any entity that has ceased to exist as a result of the merger or consolidation.

1 Name of Entity	2 NAIC Company Code	3 State of Domicile
.....

5. If the reporting entity is subject to a management agreement, including third-party administrator(s), managing general agent(s), attorney-in-fact, or similar agreement, have there been any significant changes regarding the terms of the agreement or principals involved? Yes [] No [X] N/A []
 If yes, attach an explanation.
- 6.1 State as of what date the latest financial examination of the reporting entity was made or is being made. 12/31/2016
- 6.2 State the as of date that the latest financial examination report became available from either the state of domicile or the reporting entity. This date should be the date of the examined balance sheet and not the date the report was completed or released. 12/31/2016
- 6.3 State as of what date the latest financial examination report became available to other states or the public from either the state of domicile or the reporting entity. This is the release date or completion date of the examination report and not the date of the examination (balance sheet date). 05/10/2018
- 6.4 By what department or departments?
 Office of the Commissioner of Insurance of the State of Wisconsin
- 6.5 Have all financial statement adjustments within the latest financial examination report been accounted for in a subsequent financial statement filed with Departments? Yes [] No [] N/A [X]
- 6.6 Have all of the recommendations within the latest financial examination report been complied with? Yes [] No [] N/A [X]
- 7.1 Has this reporting entity had any Certificates of Authority, licenses or registrations (including corporate registration, if applicable) suspended or revoked by any governmental entity during the reporting period? Yes [] No [X]
- 7.2 If yes, give full information:
- 8.1 Is the company a subsidiary of a bank holding company regulated by the Federal Reserve Board? Yes [] No [X]
- 8.2 If response to 8.1 is yes, please identify the name of the bank holding company.
- 8.3 Is the company affiliated with one or more banks, thrifts or securities firms? Yes [] No [X]
- 8.4 If response to 8.3 is yes, please provide below the names and location (city and state of the main office) of any affiliates regulated by a federal regulatory services agency [i.e. the Federal Reserve Board (FRB), the Office of the Comptroller of the Currency (OCC), the Federal Deposit Insurance Corporation (FDIC) and the Securities Exchange Commission (SEC)] and identify the affiliate's primary federal regulator.

1 Affiliate Name	2 Location (City, State)	3 FRB	4 OCC	5 FDIC	6 SEC
.....

STATEMENT AS OF JUNE 30, 2021 OF THE MGIC INDEMNITY CORPORATION
GENERAL INTERROGATORIES

- 9.1 Are the senior officers (principal executive officer, principal financial officer, principal accounting officer or controller, or persons performing similar functions) of the reporting entity subject to a code of ethics, which includes the following standards? Yes No
 (a) Honest and ethical conduct, including the ethical handling of actual or apparent conflicts of interest between personal and professional relationships;
 (b) Full, fair, accurate, timely and understandable disclosure in the periodic reports required to be filed by the reporting entity;
 (c) Compliance with applicable governmental laws, rules and regulations;
 (d) The prompt internal reporting of violations to an appropriate person or persons identified in the code; and
 (e) Accountability for adherence to the code.
- 9.11 If the response to 9.1 is No, please explain:
- 9.2 Has the code of ethics for senior managers been amended? Yes No
- 9.21 If the response to 9.2 is Yes, provide information related to amendment(s).
- 9.3 Have any provisions of the code of ethics been waived for any of the specified officers? Yes No
- 9.31 If the response to 9.3 is Yes, provide the nature of any waiver(s).

FINANCIAL

- 10.1 Does the reporting entity report any amounts due from parent, subsidiaries or affiliates on Page 2 of this statement? Yes No
- 10.2 If yes, indicate any amounts receivable from parent included in the Page 2 amount: \$

INVESTMENT

- 11.1 Were any of the stocks, bonds, or other assets of the reporting entity loaned, placed under option agreement, or otherwise made available for use by another person? (Exclude securities under securities lending agreements.) Yes No
- 11.2 If yes, give full and complete information relating thereto:
12. Amount of real estate and mortgages held in other invested assets in Schedule BA: \$
13. Amount of real estate and mortgages held in short-term investments: \$
- 14.1 Does the reporting entity have any investments in parent, subsidiaries and affiliates? Yes No
- 14.2 If yes, please complete the following:
- | | 1
Prior Year-End
Book/Adjusted
Carrying Value | 2
Current Quarter
Book/Adjusted
Carrying Value |
|---|--|---|
| 14.21 Bonds | \$ | \$ |
| 14.22 Preferred Stock | \$ | \$ |
| 14.23 Common Stock | \$ | \$ |
| 14.24 Short-Term Investments | \$ | \$ |
| 14.25 Mortgage Loans on Real Estate | \$ | \$ |
| 14.26 All Other | \$ | \$ |
| 14.27 Total Investment in Parent, Subsidiaries and Affiliates (Subtotal Lines 14.21 to 14.26) | \$ | \$ |
| 14.28 Total Investment in Parent included in Lines 14.21 to 14.26 above | \$ | \$ |
- 15.1 Has the reporting entity entered into any hedging transactions reported on Schedule DB? Yes No
- 15.2 If yes, has a comprehensive description of the hedging program been made available to the domiciliary state? Yes No N/A
 If no, attach a description with this statement.
16. For the reporting entity's security lending program, state the amount of the following as of the current statement date:
- 16.1 Total fair value of reinvested collateral assets reported on Schedule DL, Parts 1 and 2. \$
- 16.2 Total book adjusted/carrying value of reinvested collateral assets reported on Schedule DL, Parts 1 and 2. \$
- 16.3 Total payable for securities lending reported on the liability page. \$

STATEMENT AS OF JUNE 30, 2021 OF THE MGIC INDEMNITY CORPORATION
GENERAL INTERROGATORIES

17. Excluding items in Schedule E - Part 3 - Special Deposits, real estate, mortgage loans and investments held physically in the reporting entity's offices, vaults or safety deposit boxes, were all stocks, bonds and other securities, owned throughout the current year held pursuant to a custodial agreement with a qualified bank or trust company in accordance with Section 1, III - General Examination Considerations, F. Outsourcing of Critical Functions, Custodial or Safekeeping Agreements of the NAIC Financial Condition Examiners Handbook? Yes [X] No []
- 17.1 For all agreements that comply with the requirements of the NAIC Financial Condition Examiners Handbook, complete the following:

1 Name of Custodian(s)	2 Custodian Address
The Northern Trust Company	50 South LaSalle Street, Chicago, IL 60603

- 17.2 For all agreements that do not comply with the requirements of the NAIC Financial Condition Examiners Handbook, provide the name, location and a complete explanation:

1 Name(s)	2 Location(s)	3 Complete Explanation(s)
.....

- 17.3 Have there been any changes, including name changes, in the custodian(s) identified in 17.1 during the current quarter? Yes [] No [X]
- 17.4 If yes, give full information relating thereto:

1 Old Custodian	2 New Custodian	3 Date of Change	4 Reason
.....

- 17.5 Investment management – Identify all investment advisors, investment managers, broker/dealers, including individuals that have the authority to make investment decisions on behalf of the reporting entity. For assets that are managed internally by employees of the reporting entity, note as such. ["...that have access to the investment accounts"; "...handle securities"]

1 Name of Firm or Individual	2 Affiliation
Wellington Management Company, LLP	U.....
Nate Abramowski	I.....

- 17.5097 For those firms/individuals listed in the table for Question 17.5, do any firms/individuals unaffiliated with the reporting entity (i.e. designated with a "U") manage more than 10% of the reporting entity's invested assets? Yes [X] No []
- 17.5098 For firms/individuals unaffiliated with the reporting entity (i.e. designated with a "U") listed in the table for Question 17.5, does the total assets under management aggregate to more than 50% of the reporting entity's invested assets? Yes [X] No []

- 17.6 For those firms or individuals listed in the table for 17.5 with an affiliation code of "A" (affiliated) or "U" (unaffiliated), provide the information for the table below.

1	2	3	4	5
Central Registration Depository Number	Name of Firm or Individual	Legal Entity Identifier (LEI)	Registered With	Investment Management Agreement (IMA) Filed
106595	Wellington Management Company, LLP	549300YHP12TEZNLX41	SEC	NO.....

- 18.1 Have all the filing requirements of the Purposes and Procedures Manual of the NAIC Investment Analysis Office been followed? Yes [X] No []
- 18.2 If no, list exceptions:

19. By self-designating 5GI securities, the reporting entity is certifying the following elements for each self-designated 5GI security:
- a. Documentation necessary to permit a full credit analysis of the security does not exist or an NAIC CRP credit rating for an FE or PL security is not available.
 - b. Issuer or obligor is current on all contracted interest and principal payments.
 - c. The insurer has an actual expectation of ultimate payment of all contracted interest and principal.
- Has the reporting entity self-designated 5GI securities? Yes [] No [X]

20. By self-designating PLGI securities, the reporting entity is certifying the following elements of each self-designated PLGI security:
- a. The security was purchased prior to January 1, 2018.
 - b. The reporting entity is holding capital commensurate with the NAIC Designation reported for the security.
 - c. The NAIC Designation was derived from the credit rating assigned by an NAIC CRP in its legal capacity as a NRSRO which is shown on a current private letter rating held by the insurer and available for examination by state insurance regulators.
 - d. The reporting entity is not permitted to share this credit rating of the PL security with the SVO.
- Has the reporting entity self-designated PLGI securities? Yes [] No [X]

21. By assigning FE to a Schedule BA non-registered private fund, the reporting entity is certifying the following elements of each self-designated FE fund:
- a. The shares were purchased prior to January 1, 2019.
 - b. The reporting entity is holding capital commensurate with the NAIC Designation reported for the security.
 - c. The security had a public credit rating(s) with annual surveillance assigned by an NAIC CRP in its legal capacity as an NRSRO prior to January 1, 2019.
 - d. The fund only or predominantly holds bonds in its portfolio.
 - e. The current reported NAIC Designation was derived from the public credit rating(s) with annual surveillance assigned by an NAIC CRP in its legal capacity as an NRSRO.
 - f. The public credit rating(s) with annual surveillance assigned by an NAIC CRP has not lapsed.
- Has the reporting entity assigned FE to Schedule BA non-registered private funds that complied with the above criteria? Yes [] No [X]

GENERAL INTERROGATORIES

PART 2 - PROPERTY & CASUALTY INTERROGATORIES

1. If the reporting entity is a member of a pooling arrangement, did the agreement or the reporting entity's participation change? Yes [] No [] N/A [X]
If yes, attach an explanation.

2. Has the reporting entity reinsured any risk with any other reporting entity and agreed to release such entity from liability, in whole or in part, from any loss that may occur on the risk, or portion thereof, reinsured? Yes [] No [X]
If yes, attach an explanation.

3.1 Have any of the reporting entity's primary reinsurance contracts been canceled? Yes [] No [X]

3.2 If yes, give full and complete information thereto.

4.1 Are any of the liabilities for unpaid losses and loss adjustment expenses other than certain workers' compensation tabular reserves (see Annual Statement Instructions pertaining to disclosure of discounting for definition of "tabular reserves") discounted at a rate of interest greater than zero? Yes [] No [X]

4.2 If yes, complete the following schedule:

			TOTAL DISCOUNT				DISCOUNT TAKEN DURING PERIOD			
1	2	3	4	5	6	7	8	9	10	11
Line of Business	Maximum Interest	Discount Rate	Unpaid Losses	Unpaid LAE	IBNR	TOTAL	Unpaid Losses	Unpaid LAE	IBNR	TOTAL
TOTAL										

5. Operating Percentages:

5.1 A&H loss percent %

5.2 A&H cost containment percent %

5.3 A&H expense percent excluding cost containment expenses %

6.1 Do you act as a custodian for health savings accounts? Yes [] No [X]

6.2 If yes, please provide the amount of custodial funds held as of the reporting date \$.....

6.3 Do you act as an administrator for health savings accounts? Yes [] No [X]

6.4 If yes, please provide the balance of the funds administered as of the reporting date \$.....

7. Is the reporting entity licensed or chartered, registered, qualified, eligible or writing business in at least two states? Yes [X] No []

7.1 If no, does the reporting entity assume reinsurance business that covers risks residing in at least one state other than the state of domicile of the reporting entity? Yes [] No []

SCHEDULE F - CEDED REINSURANCE

Showing All New Reinsurers - Current Year to Date

1 NAIC Company Code	2 ID Number	3 Name of Reinsurer	4 Domiciliary Jurisdiction	5 Type of Reinsurer	6 Certified Reinsurer Rating (1 through 6)	7 Effective Date of Certified Reinsurer Rating
NONE						

STATEMENT AS OF JUNE 30, 2021 OF THE MGIC INDEMNITY CORPORATION
SCHEDULE T - EXHIBIT OF PREMIUMS WRITTEN

Current Year to Date - Allocated by States and Territories

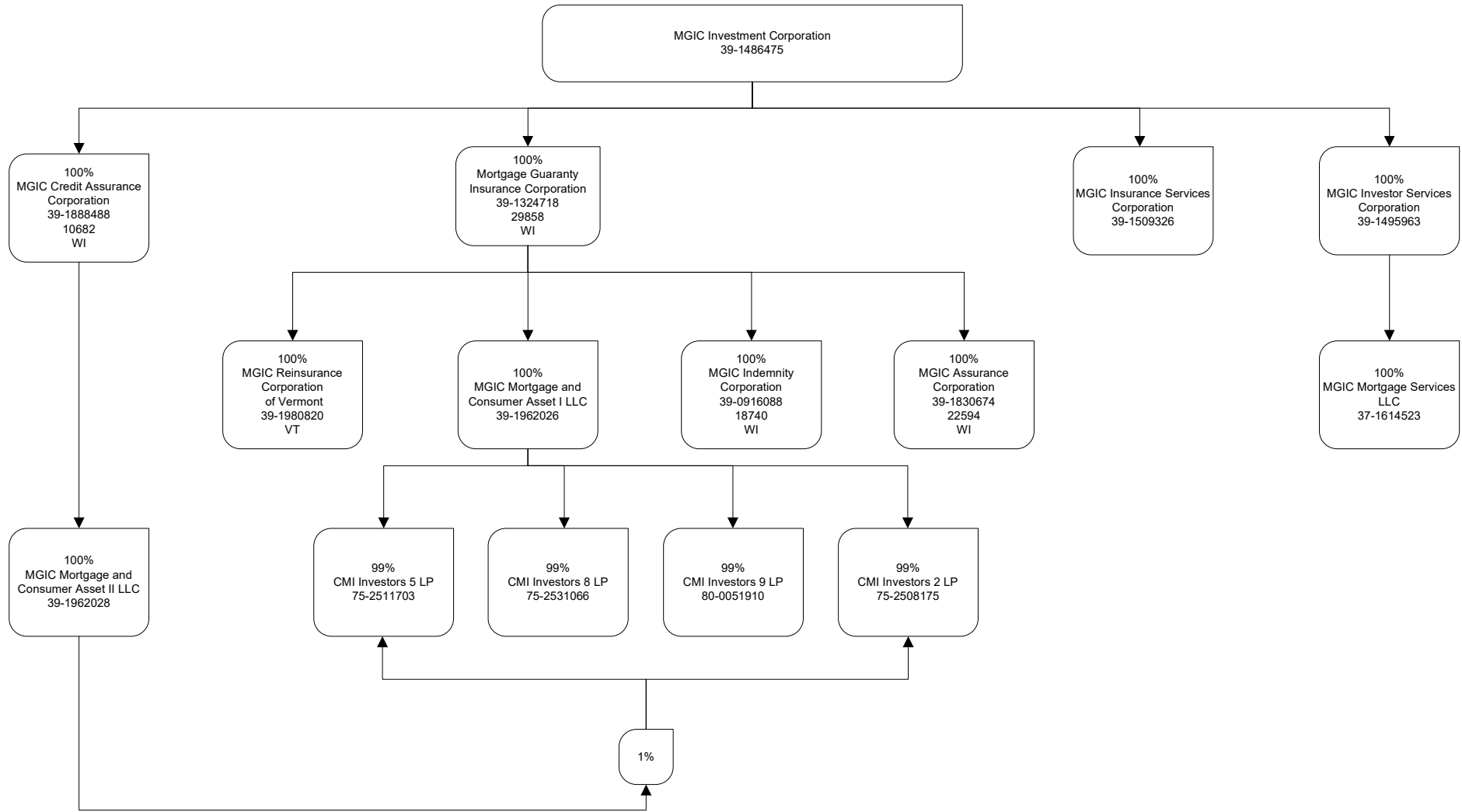
States, etc.	1 Active Status (a)	Direct Premiums Written		Direct Losses Paid (Deducting Salvage)		Direct Losses Unpaid	
		2 Current Year To Date	3 Prior Year To Date	4 Current Year To Date	5 Prior Year To Date	6 Current Year To Date	7 Prior Year To Date
1. Alabama	AL	L					
2. Alaska	AK	L					
3. Arizona	AZ	L				14,426	3,685
4. Arkansas	AR	L					
5. California	CA	L	16,529	91,187		84,372	35,508
6. Colorado	CO	L		21,336			
7. Connecticut	CT	L					
8. Delaware	DE	L		1,976			
9. District of Columbia	DC	L	1,329,064				
10. Florida	FL	L	110,682	275,801		334,666	315,018
11. Georgia	GA	L				4,517	
12. Hawaii	HI	L					
13. Idaho	ID	L	18,921	42,806		6,106	9,305
14. Illinois	IL	L		10,237			6,759
15. Indiana	IN	L		15,155			
16. Iowa	IA	L					
17. Kansas	KS	L					
18. Kentucky	KY	L		2,171		9,821	
19. Louisiana	LA	L		1,703		15,867	1,736
20. Maine	ME	L					
21. Maryland	MD	L		26,208			3,046
22. Massachusetts	MA	L					
23. Michigan	MI	L				21,430	2,492
24. Minnesota	MN	L					
25. Mississippi	MS	L					
26. Missouri	MO	L	22,395	52,633		146,197	69,246
27. Montana	MT	L					
28. Nebraska	NE	L					
29. Nevada	NV	L		6,223			2,736
30. New Hampshire	NH	L					
31. New Jersey	NJ	L	50,556	155,405		222,566	271,565
32. New Mexico	NM	L					
33. New York	NY	L	77,924	220,072		45,221	161,998
34. North Carolina	NC	L	56,063	131,306	9,531	5,108	44,533
35. North Dakota	ND	L					
36. Ohio	OH	L	140,485	386,950	(203)	265,184	233,224
37. Oklahoma	OK	L					
38. Oregon	OR	L	1,107	13,786		28,058	8,876
39. Pennsylvania	PA	L		9,709		6,935	
40. Rhode Island	RI	L					
41. South Carolina	SC	L					
42. South Dakota	SD	L					
43. Tennessee	TN	L		9,129			
44. Texas	TX	L	38,085	146,825		45,430	33,663
45. Utah	UT	L		4,349			1,893
46. Vermont	VT	L					
47. Virginia	VA	L	1,980,178	53,163		133,094	10,984
48. Washington	WA	L	564	9,999		7,970	
49. West Virginia	WV	L					
50. Wisconsin	WI	L					
51. Wyoming	WY	L					
52. American Samoa	AS	N					
53. Guam	GU	N					
54. Puerto Rico	PR	L	27,264	55,407	27,191	141,392	779,051
55. U.S. Virgin Islands	VI	N					801,024
56. Northern Mariana Islands	MP	N					
57. Canada	CAN	N					
58. Aggregate Other Alien	OT	XXX					
59. Totals	XXX		3,869,817	1,743,536	36,519	186,613	2,292,796
59. Totals	XXX		3,869,817	1,743,536	36,519	186,613	2,292,796
DETAILS OF WRITE-INS							
58001.	XXX						
58002.	XXX						
58003.	XXX						
58998. Summary of remaining write-ins for Line 58 from overflow page	XXX						
58999. Totals (Lines 58001 through 58003 plus 58998)(Line 58 above)	XXX						

(a) Active Status Counts:

L - Licensed or Chartered - Licensed Insurance carrier or domiciled RRG 52 R - Registered - Non-domiciled RRGs
E - Eligible - Reporting entities eligible or approved to write surplus lines in the state (other than their state of domicile - see DSLI) Q - Qualified - Qualified or accredited reinsurer
D - Domestic Surplus Lines Insurer (DSLII) - Reporting entities authorized to write surplus lines in the state of domicile N - None of the above - Not allowed to write business in the state 5

NOTE: Primary premiums are allocated by state based on the location of the insured property. Pool premiums are allocated based on the location of the insured.

SCHEDULE Y - INFORMATION CONCERNING ACTIVITIES OF INSURER MEMBERS OF A HOLDING COMPANY GROUP
PART 1 - ORGANIZATIONAL CHART



STATEMENT AS OF JUNE 30, 2021 OF THE MGIC INDEMNITY CORPORATION

SCHEDULE Y

PART 1A - DETAIL OF INSURANCE HOLDING COMPANY SYSTEM

1	2	3	4	5	6	7	8	9	10	11	12	13	14	15	16
Group Code	Group Name	NAIC Company Code	ID Number	Federal RSSD	CIK	Name of Securities Exchange if Publicly Traded (U.S. or International)	Names of Parent, Subsidiaries Or Affiliates	Domiciliary Location	Relationship to Reporting Entity	Directly Controlled by (Name of Entity/Person)	Type of Control (Ownership, Board, Management, Attorney-in-Fact, Influence, Other)	If Control is Ownership Provide Percentage	Ultimate Controlling Entity(ies)/Person(s)	Is an SCA Filing Required? (Y/N)	*
.0105	Mortgage Guaranty Insurance Corporation	.00000	39-1486475		876437	New York Stock Exchange	MGIC Investment Corporation	WI	UIP		Ownership	100.000		N	
.0105	Mortgage Guaranty Insurance Corporation	29858	39-1324718				Mortgage Guaranty Insurance Corporation	WI	UDP	MGIC Investment Corporation	Ownership	100.000	MGIC Investment Corporation	N	
.0105	Mortgage Guaranty Insurance Corporation	.00000	39-1509326				MGIC Insurance Services Corporation	WI	NIA	MGIC Investment Corporation	Ownership	100.000	MGIC Investment Corporation	N	
.0105	Mortgage Guaranty Insurance Corporation	.00000	39-1495963				MGIC Investor Services Corporation	WI	NIA	MGIC Investment Corporation	Ownership	100.000	MGIC Investment Corporation	N	
.0105	Mortgage Guaranty Insurance Corporation	.18740	39-0916088				MGIC Indemnity Corporation	WI	RE	Mortgage Guaranty Insurance Corporation	Ownership	100.000	MGIC Investment Corporation	N	
.0105	Mortgage Guaranty Insurance Corporation	.10682	39-1888488				MGIC Credit Assurance Corporation	WI	IA	MGIC Investment Corporation	Ownership	100.000	MGIC Investment Corporation	N	
.0105	Mortgage Guaranty Insurance Corporation	.22594	39-1830674				MGIC Assurance Corporation	WI	IA	Mortgage Guaranty Insurance Corporation	Ownership	100.000	MGIC Investment Corporation	N	
.0105	Mortgage Guaranty Insurance Corporation	.00000	39-1980820				MGIC Reinsurance Corporation of Vermont	VT	IA	Mortgage Guaranty Insurance Corporation	Ownership	100.000	MGIC Investment Corporation	N	
.0105	Mortgage Guaranty Insurance Corporation	.00000	39-1962026				MGIC Mortgage and Consumer Asset I LLC	DE	NIA	Mortgage Guaranty Insurance Corporation	Ownership	100.000	MGIC Investment Corporation	N	
.0105	Mortgage Guaranty Insurance Corporation	.00000	37-1614523				MGIC Mortgage Services LLC	WI	NIA	MGIC Investor Services Corporation	Ownership	100.000	MGIC Investment Corporation	N	
.0105	Mortgage Guaranty Insurance Corporation	.00000	39-1962028				MGIC Mortgage and Consumer Asset II LLC	DE	NIA	MGIC Credit Assurance Corporation	Ownership	100.000	MGIC Investment Corporation	N	
.0105	Mortgage Guaranty Insurance Corporation	.00000	75-2511703				CMI Investors 5 LP	DE	NIA	MGIC Mortgage and Consumer Asset I LLC	Ownership	99.000	MGIC Investment Corporation	Y	
.0105	Mortgage Guaranty Insurance Corporation	.00000	75-2511703				CMI Investors 5 LP	DE	NIA	MGIC Mortgage and Consumer Asset II LLC	Ownership	1.000	MGIC Investment Corporation	Y	
.0105	Mortgage Guaranty Insurance Corporation	.00000	75-2531066				CMI Investors 8 LP	DE	NIA	MGIC Mortgage and Consumer Asset I LLC	Ownership	99.000	MGIC Investment Corporation	Y	
.0105	Mortgage Guaranty Insurance Corporation	.00000	75-2531066				CMI Investors 8 LP	DE	NIA	MGIC Mortgage and Consumer Asset II LLC	Ownership	1.000	MGIC Investment Corporation	Y	
.0105	Mortgage Guaranty Insurance Corporation	.00000	80-0051910				CMI Investors 9 LP	DE	NIA	MGIC Mortgage and Consumer Asset I LLC	Ownership	99.000	MGIC Investment Corporation	Y	
.0105	Mortgage Guaranty Insurance Corporation	.00000	80-0051910				CMI Investors 9 LP	DE	NIA	MGIC Mortgage and Consumer Asset II LLC	Ownership	1.000	MGIC Investment Corporation	Y	
.0105	Mortgage Guaranty Insurance Corporation	.00000	75-2508175				CMI Investors 2 LP	DE	NIA	MGIC Mortgage and Consumer Asset I LLC	Ownership	99.000	MGIC Investment Corporation	Y	
.0105	Mortgage Guaranty Insurance Corporation	.00000	75-2508175				CMI Investors 2 LP	DE	NIA	MGIC Mortgage and Consumer Asset II LLC	Ownership	1.000	MGIC Investment Corporation	Y	

Asterisk	Explanation
----------	-------------

STATEMENT AS OF JUNE 30, 2021 OF THE MGIC INDEMNITY CORPORATION

PART 1 - LOSS EXPERIENCE

Line of Business	Current Year to Date			4 Prior Year to Date Direct Loss Percentage
	1 Direct Premiums Earned	2 Direct Losses Incurred	3 Direct Loss Percentage	
1. Fire				
2. Allied Lines				
3. Farmowners multiple peril				
4. Homeowners multiple peril				
5. Commercial multiple peril				
6. Mortgage guaranty	1,751,449	45,942	2.6	38.2
8. Ocean marine				
9. Inland marine				
10. Financial guaranty				
11.1 Medical professional liability - occurrence				
11.2 Medical professional liability - claims-made				
12. Earthquake				
13. Group accident and health				
14. Credit accident and health				
15. Other accident and health				
16. Workers' compensation				
17.1 Other liability - occurrence				
17.2 Other liability - claims-made				
17.3 Excess workers' compensation				
18.1 Products liability - occurrence				
18.2 Products liability - claims-made				
19.1,19.2 Private passenger auto liability				
19.3,19.4 Commercial auto liability				
21. Auto physical damage				
22. Aircraft (all perils)				
23. Fidelity				
24. Surety				
26. Burglary and theft				
27. Boiler and machinery				
28. Credit				
29. International				
30. Warranty				
31. Reinsurance - Nonproportional Assumed Property	XXX	XXX	XXX	XXX
32. Reinsurance - Nonproportional Assumed Liability	XXX	XXX	XXX	XXX
33. Reinsurance - Nonproportional Assumed Financial Lines	XXX	XXX	XXX	XXX
34. Aggregate write-ins for other lines of business				
35. Totals	1,751,449	45,942	2.6	38.2
DETAILS OF WRITE-INS				
3401.				
3402.				
3403.				
3498. Summary of remaining write-ins for Line 34 from overflow page				
3499. Totals (Lines 3401 through 3403 plus 3498)(Line 34 above)				

PART 2 - DIRECT PREMIUMS WRITTEN

Line of Business	1	2	3
	Current Quarter	Current Year to Date	Prior Year Year to Date
1. Fire			
2. Allied Lines			
3. Farmowners multiple peril			
4. Homeowners multiple peril			
5. Commercial multiple peril			
6. Mortgage guaranty	1,909,084	3,869,817	1,743,536
8. Ocean marine			
9. Inland marine			
10. Financial guaranty			
11.1 Medical professional liability - occurrence			
11.2 Medical professional liability - claims-made			
12. Earthquake			
13. Group accident and health			
14. Credit accident and health			
15. Other accident and health			
16. Workers' compensation			
17.1 Other liability - occurrence			
17.2 Other liability - claims-made			
17.3 Excess workers' compensation			
18.1 Products liability - occurrence			
18.2 Products liability - claims-made			
19.1,19.2 Private passenger auto liability			
19.3,19.4 Commercial auto liability			
21. Auto physical damage			
22. Aircraft (all perils)			
23. Fidelity			
24. Surety			
26. Burglary and theft			
27. Boiler and machinery			
28. Credit			
29. International			
30. Warranty			
31. Reinsurance - Nonproportional Assumed Property	XXX	XXX	XXX
32. Reinsurance - Nonproportional Assumed Liability	XXX	XXX	XXX
33. Reinsurance - Nonproportional Assumed Financial Lines	XXX	XXX	XXX
34. Aggregate write-ins for other lines of business			
35. Totals	1,909,084	3,869,817	1,743,536
DETAILS OF WRITE-INS			
3401.			
3402.			
3403.			
3498. Summary of remaining write-ins for Line 34 from overflow page			
3499. Totals (Lines 3401 through 3403 plus 3498)(Line 34 above)			

STATEMENT AS OF JUNE 30, 2021 OF THE MGIC INDEMNITY CORPORATION

PART 3 (000 omitted)

LOSS AND LOSS ADJUSTMENT EXPENSE RESERVES SCHEDULE

	1	2	3	4	5	6	7	8	9	10	11	12	13
Years in Which Losses Occurred	Prior Year-End Known Case Loss and LAE Reserves	Prior Year-End IBNR Loss and LAE Reserves	Total Prior Year-End Loss and LAE Reserves (Cols. 1+2)	2021 Loss and LAE Payments on Claims Reported as of Prior Year-End	2021 Loss and LAE Payments on Claims Unreported as of Prior Year-End	Total 2021 Loss and LAE Payments (Cols. 4+5)	Q.S. Date Known Case Loss and LAE Reserves on Claims Reported and Open as of Prior Year End	Q.S. Date Known Case Loss and LAE Reserves on Claims Reported or Reopened Subsequent to Prior Year End	Q.S. Date IBNR Loss and LAE Reserves	Total Q.S. Loss and LAE Reserves (Cols.7+8+9)	Prior Year-End Known Case Loss and LAE Reserves Developed (Savings)/ Deficiency (Cols.4+7 minus Col. 1)	Prior Year-End IBNR Loss and LAE Reserves Developed (Savings)/ Deficiency (Cols. 5+8+9 minus Col. 2)	Prior Year-End Total Loss and LAE Reserve Developed (Savings)/ Deficiency (Cols. 11+12)
1. 2018 + Prior													
2. 2019													
3. Subtotals 2019 + Prior													
4. 2020	156	52	208	9		9	178			178	31	(52)	(21)
5. Subtotals 2020 + Prior	156	52	208	9		9	178			178	31	(52)	(21)
6. 2021	XXX	XXX	XXX	XXX			XXX	162	17	179	XXX	XXX	XXX
7. Totals	156	52	208	9		9	178	162	17	357	31	(52)	(21)
8. Prior Year-End Surplus As Regards Policyholders	103,197										Col. 11, Line 7 As % of Col. 1 Line 7	Col. 12, Line 7 As % of Col. 2 Line 7	Col. 13, Line 7 As % of Col. 3 Line 7
											1. 19.9	2. (100.0)	3. (10.1)
													Col. 13, Line 7 As a % of Col. 1 Line 8
													4. 0.0

SUPPLEMENTAL EXHIBITS AND SCHEDULES INTERROGATORIES

The following supplemental reports are required to be filed as part of your statement filing. However, in the event that your company does not transact the type of business for which the special report must be filed, your response of NO to the specific interrogatory will be accepted in lieu of filing a "NONE" report and a bar code will be printed below. If the supplement is required of your company but is not being filed for whatever reason enter SEE EXPLANATION and provide an explanation following the interrogatory questions.

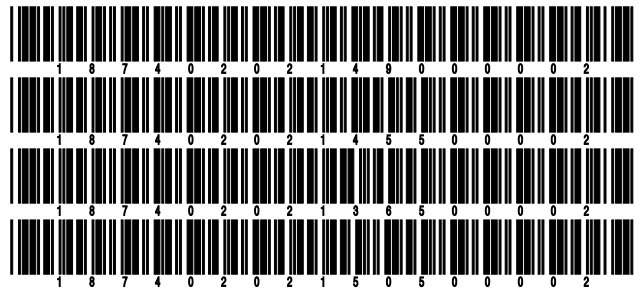
	Response
1. Will the Trusteed Surplus Statement be filed with the state of domicile and the NAIC with this statement?	NO
2. Will Supplement A to Schedule T (Medical Professional Liability Supplement) be filed with this statement?	NO
3. Will the Medicare Part D Coverage Supplement be filed with the state of domicile and the NAIC with this statement?	NO
4. Will the Director and Officer Insurance Coverage Supplement be filed with the state of domicile and the NAIC with this statement?	NO

Explanations:

- 1.
- 2.
- 3.
- 4.

Bar Codes:

1. Trusteed Surplus Statement [Document Identifier 490]
2. Supplement A to Schedule T [Document Identifier 455]
3. Medicare Part D Coverage Supplement [Document Identifier 365]
4. Director and Officer Supplement [Document Identifier 505]



STATEMENT AS OF JUNE 30, 2021 OF THE MGIC INDEMNITY CORPORATION

SCHEDULE A - VERIFICATION

Real Estate

	1 Year to Date	2 Prior Year Ended December 31
1. Book/adjusted carrying value, December 31 of prior year		
2. Cost of acquired:		
2.1 Actual cost at time of acquisition		
2.2 Additional investment made after acquisition		
3. Current year change in encumbrances		
4. Total gain (loss) on disposals		
5. Deduct amounts received on disposals		
6. Total foreign exchange change in book/adjusted carrying value		
7. Deduct current year's other than temporary impairment recognized		
8. Deduct current year's depreciation		
9. Book/adjusted carrying value at the end of current period (Lines 1+2+3+4-5+6-7-8)		
10. Deduct total nonadmitted amounts		
11. Statement value at end of current period (Line 9 minus Line 10)		

NONE

SCHEDULE B - VERIFICATION

Mortgage Loans

	1 Year to Date	2 Prior Year Ended December 31
1. Book value/recorded investment excluding accrued interest, December 31 of prior year		
2. Cost of acquired:		
2.1 Actual cost at time of acquisition		
2.2 Additional investment made after acquisition		
3. Capitalized deferred interest and other		
4. Accrual of discount		
5. Unrealized valuation increase (decrease)		
6. Total gain (loss) on disposals		
7. Deduct amounts received on disposals		
8. Deduct amortization of premium and mortgage interest paid and commitment fees		
9. Total foreign exchange change in book value/recorded investment excluding accrued interest		
10. Deduct current year's other than temporary impairment recognized		
11. Book value/recorded investment excluding accrued interest at end of current period (Lines 1+2+3+4+5+6-7-8+9-10)		
12. Total valuation allowance		
13. Subtotal (Line 11 plus Line 12)		
14. Deduct total nonadmitted amounts		
15. Statement value at end of current period (Line 13 minus Line 14)		

NONE

SCHEDULE BA - VERIFICATION

Other Long-Term Invested Assets

	1 Year to Date	2 Prior Year Ended December 31
1. Book/adjusted carrying value, December 31 of prior year		
2. Cost of acquired:		
2.1 Actual cost at time of acquisition		
2.2 Additional investment made after acquisition		
3. Capitalized deferred interest and other		
4. Accrual of discount		
5. Unrealized valuation increase (decrease)		
6. Total gain (loss) on disposals		
7. Deduct amounts received on disposals		
8. Deduct amortization of premium and depreciation		
9. Total foreign exchange change in book/adjusted carrying value		
10. Deduct current year's other than temporary impairment recognized		
11. Book/adjusted carrying value at end of current period (Lines 1+2+3+4+5+6-7-8+9-10)		
12. Deduct total nonadmitted amounts		
13. Statement value at end of current period (Line 11 minus Line 12)		

NONE

SCHEDULE D - VERIFICATION

Bonds and Stocks

	1 Year to Date	2 Prior Year Ended December 31
1. Book/adjusted carrying value of bonds and stocks, December 31 of prior year	149,068,251	153,224,237
2. Cost of bonds and stocks acquired	19,604,517	61,267,225
3. Accrual of discount	49,185	168,480
4. Unrealized valuation increase (decrease)		
5. Total gain (loss) on disposals	843	59,515
6. Deduct consideration for bonds and stocks disposed of	17,599,722	65,102,557
7. Deduct amortization of premium	311,035	669,397
8. Total foreign exchange change in book/adjusted carrying value		
9. Deduct current year's other than temporary impairment recognized		56,739
10. Total investment income recognized as a result of prepayment penalties and/or acceleration fees		177,487
11. Book/adjusted carrying value at end of current period (Lines 1+2+3+4+5-6-7+8-9+10)	150,812,039	149,068,251
12. Deduct total nonadmitted amounts		
13. Statement value at end of current period (Line 11 minus Line 12)	150,812,039	149,068,251

STATEMENT AS OF JUNE 30, 2021 OF THE MGIC INDEMNITY CORPORATION

SCHEDULE D - PART 1B

Showing the Acquisitions, Dispositions and Non-Trading Activity
During the Current Quarter for all Bonds and Preferred Stock by NAIC Designation

NAIC Designation	1 Book/Adjusted Carrying Value Beginning of Current Quarter	2 Acquisitions During Current Quarter	3 Dispositions During Current Quarter	4 Non-Trading Activity During Current Quarter	5 Book/Adjusted Carrying Value End of First Quarter	6 Book/Adjusted Carrying Value End of Second Quarter	7 Book/Adjusted Carrying Value End of Third Quarter	8 Book/Adjusted Carrying Value December 31 Prior Year
BONDS								
1. NAIC 1 (a)	109,573,789	5,526,219	8,105,707	(89,174)	109,573,789	106,905,127		110,887,073
2. NAIC 2 (a)	40,168,300	3,786,994		(48,382)	40,168,300	43,906,912		38,181,178
3. NAIC 3 (a)								
4. NAIC 4 (a)								
5. NAIC 5 (a)								
6. NAIC 6 (a)								
7. Total Bonds	149,742,089	9,313,213	8,105,707	(137,556)	149,742,089	150,812,039		149,068,251
PREFERRED STOCK								
8. NAIC 1								
9. NAIC 2								
10. NAIC 3								
11. NAIC 4								
12. NAIC 5								
13. NAIC 6								
14. Total Preferred Stock								
15. Total Bonds and Preferred Stock	149,742,089	9,313,213	8,105,707	(137,556)	149,742,089	150,812,039		149,068,251

(a) Book/Adjusted Carrying Value column for the end of the current reporting period includes the following amount of short-term and cash equivalent bonds by NAIC designation:

NAIC 1 \$; NAIC 2 \$; NAIC 3 \$ NAIC 4 \$; NAIC 5 \$; NAIC 6 \$

S102

Schedule DA - Part 1 - Short-Term Investments

N O N E

Schedule DA - Verification - Short-Term Investments

N O N E

Schedule DB - Part A - Verification - Options, Caps, Floors, Collars, Swaps and Forwards

N O N E

Schedule DB - Part B - Verification - Futures Contracts

N O N E

Schedule DB - Part C - Section 1 - Replication (Synthetic Asset) Transactions (RSATs) Open

N O N E

Schedule DB-Part C-Section 2-Reconciliation of Replication (Synthetic Asset) Transactions Open

N O N E

Schedule DB - Verification - Book/Adjusted Carrying Value, Fair Value and Potential Exposure of
Derivatives

N O N E

STATEMENT AS OF JUNE 30, 2021 OF THE MGIC INDEMNITY CORPORATION

SCHEDULE E - PART 2 - VERIFICATION

(Cash Equivalents)

	1	2
	Year To Date	Prior Year Ended December 31
1. Book/adjusted carrying value, December 31 of prior year	8,367,284	679,436
2. Cost of cash equivalents acquired	20,270,010	56,555,707
3. Accrual of discount		
4. Unrealized valuation increase (decrease)	(38)	15
5. Total gain (loss) on disposals	(12)	(587)
6. Deduct consideration received on disposals	15,245,358	48,867,287
7. Deduct amortization of premium		
8. Total foreign exchange change in book/adjusted carrying value		
9. Deduct current year's other than temporary impairment recognized		
10. Book/adjusted carrying value at end of current period (Lines 1+2+3+4+5-6-7+8-9)	13,391,886	8,367,284
11. Deduct total nonadmitted amounts		
12. Statement value at end of current period (Line 10 minus Line 11)	13,391,886	8,367,284

Schedule A - Part 2 - Real Estate Acquired and Additions Made

N O N E

Schedule A - Part 3 - Real Estate Disposed

N O N E

Schedule B - Part 2 - Mortgage Loans Acquired and Additions Made

N O N E

Schedule B - Part 3 - Mortgage Loans Disposed, Transferred or Repaid

N O N E

Schedule BA - Part 2 - Other Long-Term Invested Assets Acquired and Additions Made

N O N E

Schedule BA - Part 3 - Other Long-Term Invested Assets Disposed, Transferred or Repaid

N O N E

STATEMENT AS OF JUNE 30, 2021 OF THE MGIC INDEMNITY CORPORATION

SCHEDULE D - PART 3

Show All Long-Term Bonds and Stock Acquired During the Current Quarter

1	2	3	4	5	6	7	8	9	10
CUSIP Identification	Description	Foreign	Date Acquired	Name of Vendor	Number of Shares of Stock	Actual Cost	Par Value	Paid for Accrued Interest and Dividends	NAIC Designation, NAIC Designation Modifier and SVO Administrative Symbol
041806-P6-1	Arlington Tex Hgr Edu Fin Rev Variable Txbi Ref Ser A 3.000% 08/15/44		.06/04/2021	DA Davidson and Co		654,503	620,000		1.A FE
20281P-NE-8	Commonwealth Fing Auth PA Rev Taxable Ser A 2.991% 06/01/42		.06/17/2021	Piper, Jaffray & Hopwood		295,000	295,000		1.E FE
342816-S2-2	Florida State Muni Pwr Agy Rev Txbi Sub All Pwr Supply Proj 1.425% 10/01/26		.04/16/2021	Goldman Sachs & Co.		500,000	500,000		1.G FE
562784-AM-0	Manhattan Beach CA Pension Ob Taxable 2.341% 01/01/32		.04/29/2021	Bank of America		200,000	200,000		1.A FE
72178J-AL-7	Pima Cnty AZ Pledged Rev Oblig Taxable 2.194% 05/01/32		.04/22/2021	J.P. Morgan		405,000	405,000		1.B FE
3199999. Subtotal - Bonds - U.S. Special Revenues						2,054,503	2,020,000		XXX
053015-AG-8	Automatic Data Processing 1.700% 05/15/28		.05/11/2021	Bank of America		677,946	680,000		1.D FE
620076-BU-2	Motorola Solutions Inc. 2.750% 05/24/31		.05/10/2021	Bank of America		910,000	910,000		2.C FE
62928C-AA-0	NGPL Pipeco LLC 3.250% 07/15/31		.05/03/2021	Wells Fargo		529,603	530,000		2.C FE
87284A-BD-6	T Mobile USA Inc 3.750% 04/15/27		.06/30/2021	Wells Fargo		2,347,391	2,120,000	17,004	2.C FE
14316A-AE-7	Carlyle Global Market Strat Series 17-5A Class A2 1.588% 01/20/30	D.	.06/29/2021	Citigroup Global Markets Inc.		2,087,009	2,090,000	6,639	1.C FE
36320M-AN-8	Galaxy CL0 Ltd Series 15-20A Class BR 1.538% 04/20/31	D.	.06/29/2021	RBC Capital Markets		706,761	708,000	2,178	1.C FE
3899999. Subtotal - Bonds - Industrial and Miscellaneous (Unaffiliated)						7,258,710	7,038,000	25,821	XXX
8399997. Total - Bonds - Part 3						9,313,213	9,058,000	25,821	XXX
8399998. Total - Bonds - Part 5						XXX	XXX	XXX	XXX
8399999. Total - Bonds						9,313,213	9,058,000	25,821	XXX
8999997. Total - Preferred Stocks - Part 3							XXX		XXX
8999998. Total - Preferred Stocks - Part 5						XXX	XXX	XXX	XXX
8999999. Total - Preferred Stocks							XXX		XXX
9799997. Total - Common Stocks - Part 3							XXX		XXX
9799998. Total - Common Stocks - Part 5						XXX	XXX	XXX	XXX
9799999. Total - Common Stocks							XXX		XXX
9899999. Total - Preferred and Common Stocks							XXX		XXX
9999999 - Totals						9,313,213	XXX	25,821	XXX

E04

STATEMENT AS OF JUNE 30, 2021 OF THE MGIC INDEMNITY CORPORATION

SCHEDULE D - PART 4

Show All Long-Term Bonds and Stock Sold, Redeemed or Otherwise Disposed of During the Current Quarter

1	2	3	4	5	6	7	8	9	10	Change In Book/Adjusted Carrying Value					16	17	18	19	20	21	22	
										11	12	13	14	15								
CUSIP Identification	Description	For- eign	Disposal Date	Name of Purchaser	Number of Shares of Stock	Consid- eration	Par Value	Actual Cost	Prior Year Book/ Adjusted Carrying Value	Unrealized Valuation Increase/ (Decrease)	Current Year's (Amor- tization)/ Accretion	Current Year's Other Than Temporary Impairment Recogn- ized	Total Change in Book/ Adjusted Carrying Value (11 + 12 - 13)	Total Foreign Exchange Change in Book /Adjusted Carrying Value	Book/ Adjusted Carrying Value at Disposal Date	Foreign Exchange Gain (Loss) on Disposal	Realized Gain (Loss) on Disposal	Total Gain (Loss) on Disposal	Bond Interest/ Stock Dividends Received During Year	Stated Con- tractual Maturity Date	NAIC Desig- nation, NAIC Desig- nation Modifier and SVO Admini- strative Symbol	
36179U-QA-3	Government National Mortgage A G2 MA5849 3.500% 04/20/34		04/01/2021	Paydown		101,759	101,759	105,718	105,561		(3,801)		(3,801)		101,759				1,187	04/20/2034	1.A	
36179U-QA-3	Government National Mortgage A G2 MA5849 3.500% 04/20/34		05/01/2021	Paydown		105,259	105,259	109,354	109,189		(3,930)		(3,930)		105,259				1,535	04/20/2034	1.A	
36179U-QA-3	Government National Mortgage A G2 MA5849 3.500% 04/20/34		06/01/2021	Paydown		83,048	83,048	86,279	86,149		(3,101)		(3,101)		83,048				1,453	04/20/2034	1.A	
0599999	Subtotal - Bonds - U.S. Governments					290,066	290,066	301,351	300,899		(10,832)		(10,832)		290,066				4,175		XXX	XXX
3137FN-5Y-2	Federal Home Loan Mtg Corp Series 4904 Class CA 3.000% 08/15/57		04/01/2021	Paydown		65,507	65,507	66,786	66,772		(1,266)		(1,266)		65,507				655	08/15/2057	1.A	
3137FN-5Y-2	Federal Home Loan Mtg Corp Series 4904 Class CA 3.000% 08/15/57		05/01/2021	Paydown		51,110	51,110	52,108	52,098		(988)		(988)		51,110				639	08/15/2057	1.A	
3137FN-5Y-2	Federal Home Loan Mtg Corp Series 4904 Class CA 3.000% 08/15/57		06/01/2021	Paydown		119,024	119,024	121,349	121,324		(2,300)		(2,300)		119,024				1,785	08/15/2057	1.A	
677581-DW-7	Ohio St Major New State Infrs BAB 4.518% 06/15/21		06/15/2021	Maturity		1,880,000	1,880,000	2,154,010	1,895,286		(15,286)		(15,286)		1,880,000				42,469	06/15/2021	1.C FE	
3199999	Subtotal - Bonds - U.S. Special Revenues					2,115,641	2,115,641	2,394,253	2,135,480		(19,840)		(19,840)		2,115,641				45,548		XXX	XXX
037833-AR-1	Apple Inc 2.850% 05/06/21		05/06/2021	Maturity		1,500,000	1,500,000	1,531,050	1,502,661		(2,661)		(2,661)		1,500,000				21,375	05/06/2021	1.B FE	
05565E-AF-2	Bmw Us Capital Lic 2.000% 04/11/21		04/11/2021	Maturity		2,200,000	2,200,000	2,159,542	2,194,566		5,434		5,434		2,200,000				22,000	04/11/2021	1.F FE	
369550-BE-7	General Dynamics Corp 3.000% 05/11/21		05/11/2021	Maturity		2,000,000	2,000,000	1,996,120	1,999,502		498		498		2,000,000				30,000	05/11/2021	1.F FE	
3899999	Subtotal - Bonds - Industrial and Miscellaneous (Unaffiliated)					5,700,000	5,700,000	5,686,712	5,696,729		3,271		3,271		5,700,000				73,375		XXX	XXX
8399997	Total - Bonds - Part 4					8,105,707	8,105,707	8,382,316	8,133,108		(27,401)		(27,401)		8,105,707				123,098		XXX	XXX
8399998	Total - Bonds - Part 5					XXX	XXX	XXX	XXX	XXX	XXX	XXX	XXX	XXX	XXX	XXX	XXX	XXX	XXX	XXX	XXX	XXX
8399999	Total - Bonds					8,105,707	8,105,707	8,382,316	8,133,108		(27,401)		(27,401)		8,105,707				123,098		XXX	XXX
8999997	Total - Preferred Stocks - Part 4							XXX													XXX	XXX
8999998	Total - Preferred Stocks - Part 5					XXX	XXX	XXX	XXX	XXX	XXX	XXX	XXX	XXX	XXX	XXX	XXX	XXX	XXX	XXX	XXX	XXX
8999999	Total - Preferred Stocks							XXX													XXX	XXX
9799997	Total - Common Stocks - Part 4							XXX													XXX	XXX
9799998	Total - Common Stocks - Part 5					XXX	XXX	XXX	XXX	XXX	XXX	XXX	XXX	XXX	XXX	XXX	XXX	XXX	XXX	XXX	XXX	XXX
9799999	Total - Common Stocks							XXX													XXX	XXX
9899999	Total - Preferred and Common Stocks							XXX													XXX	XXX
9999999	- Totals					8,105,707	XXX	8,382,316	8,133,108		(27,401)		(27,401)		8,105,707				123,098		XXX	XXX

E05

Schedule DB - Part A - Section 1 - Options, Caps, Floors, Collars, Swaps and Forwards Open

N O N E

Schedule DB - Part B - Section 1 - Futures Contracts Open

N O N E

Schedule DB - Part B - Section 1B - Brokers with whom cash deposits have been made

N O N E

Schedule DB - Part D - Section 1 - Counterparty Exposure for Derivative Instruments Open

N O N E

Schedule DB - Part D-Section 2 - Collateral for Derivative Instruments Open - Pledged By

N O N E

Schedule DB - Part D-Section 2 - Collateral for Derivative Instruments Open - Pledged To

N O N E

Schedule DB - Part E - Derivatives Hedging Variable Annuity Guarantees

N O N E

Schedule DL - Part 1 - Reinvested Collateral Assets Owned

N O N E

Schedule DL - Part 2 - Reinvested Collateral Assets Owned

N O N E

STATEMENT AS OF JUNE 30, 2021 OF THE MGIC INDEMNITY CORPORATION

SCHEDULE E - PART 1 - CASH

Month End Depository Balances

1 Depository	2 Code	3 Rate of Interest	4 Amount of Interest Received During Current Quarter	5 Amount of Interest Accrued at Current Statement Date	Book Balance at End of Each Month During Current Quarter			9 *
					6 First Month	7 Second Month	8 Third Month	
The Bank of New York Mellon ... New York, NY	C				3,929,250	4,229,250	4,529,250	.XXX.
Wilmington Trust Wilmington, DE	C				48,731	48,731	78,056	.XXX.
US Bank Milwaukee, WI		0.160	156	6	281,133	57,252	13,862	.XXX.
0199998. Deposits in ... depositories that do not exceed the allowable limit in any one depository (See instructions) - Open Depositories	XXX	XXX						.XXX.
0199999. Totals - Open Depositories	XXX	XXX	156	6	4,259,114	4,335,233	4,621,168	.XXX.
0299998. Deposits in ... depositories that do not exceed the allowable limit in any one depository (See instructions) - Suspended Depositories	XXX	XXX						.XXX.
0299999. Totals - Suspended Depositories	XXX	XXX						.XXX.
0399999. Total Cash on Deposit	XXX	XXX	156	6	4,259,114	4,335,233	4,621,168	.XXX.
0499999. Cash in Company's Office	XXX	XXX	XXX	XXX				.XXX.
0599999. Total - Cash	XXX	XXX	156	6	4,259,114	4,335,233	4,621,168	.XXX.

STATEMENT AS OF JUNE 30, 2021 OF THE MGIC INDEMNITY CORPORATION

SCHEDULE E - PART 2 - CASH EQUIVALENTS

Show Investments Owned End of Current Quarter

1 CUSIP	2 Description	3 Code	4 Date Acquired	5 Rate of Interest	6 Maturity Date	7 Book/Adjusted Carrying Value	8 Amount of Interest Due and Accrued	9 Amount Received During Year
0599999. Total - U.S. Government Bonds								
1099999. Total - All Other Government Bonds								
1799999. Total - U.S. States, Territories and Possessions Bonds								
2499999. Total - U.S. Political Subdivisions Bonds								
3199999. Total - U.S. Special Revenues Bonds								
3899999. Total - Industrial and Miscellaneous (Unaffiliated) Bonds								
4899999. Total - Hybrid Securities								
5599999. Total - Parent, Subsidiaries and Affiliates Bonds								
6099999. Subtotal - SVO Identified Funds								
6599999. Subtotal - Unaffiliated Bank Loans								
7699999. Total - Issuer Obligations								
7799999. Total - Residential Mortgage-Backed Securities								
7899999. Total - Commercial Mortgage-Backed Securities								
7999999. Total - Other Loan-Backed and Structured Securities								
8099999. Total - SVO Identified Funds								
8199999. Total - Affiliated Bank Loans								
8299999. Total - Unaffiliated Bank Loans								
8399999. Total Bonds								
38141W-23-2	Goldman Sachs Financial Square Mkt Fund		.06/30/2021	0.016		379,982		25
38141W-27-3	Goldman Sachs FS Govt Inst Fund		.06/30/2021	0.026		3,085,676		412
665278-40-4	Northern Trust US Government Portfolio		.06/30/2021			9,926,228		85
8699999. Subtotal - All Other Money Market Mutual Funds						13,391,886		522
9999999 - Total Cash Equivalents								